



Intel[®] 865G/865GV865PE/865P Chipset

CRB Schematics

*Addendum for the Intel[®] Pentium[®] 4 Processor on 90 nm Process
with Loadline A Platforms – 3 Phase VR*

February 2004

Revision 1.0



INFORMATION IN THIS DOCUMENT IS PROVIDED IN CONNECTION WITH INTEL® PRODUCTS. NO LICENSE, EXPRESS OR IMPLIED, BY ESTOPPEL OR OTHERWISE, TO ANY INTELLECTUAL PROPERTY RIGHTS IS GRANTED BY THIS DOCUMENT. EXCEPT AS PROVIDED IN INTEL'S TERMS AND CONDITIONS OF SALE FOR SUCH PRODUCTS, INTEL ASSUMES NO LIABILITY WHATSOEVER, AND INTEL DISCLAIMS ANY EXPRESS OR IMPLIED WARRANTY, RELATING TO SALE AND/OR USE OF INTEL PRODUCTS INCLUDING LIABILITY OR WARRANTIES RELATING TO FITNESS FOR A PARTICULAR PURPOSE, MERCHANTABILITY, OR INFRINGEMENT OF ANY PATENT, COPYRIGHT OR OTHER INTELLECTUAL PROPERTY RIGHT. Intel products are not intended for use in medical, life saving, or life sustaining applications.

Intel may make changes to specifications and product descriptions at any time, without notice.

Designers must not rely on the absence or characteristics of any features or instructions marked "reserved" or "undefined." Intel reserves these for future definition and shall have no responsibility whatsoever for conflicts or incompatibilities arising from future changes to them.

The Intel® 865G/865GV/865PE/865P Chipset may contain design defects or errors known as errata which may cause the product to deviate from published specifications. Current characterized errata are available on request.

Contact your local Intel sales office or your distributor to obtain the latest specifications and before placing your product order.

Intel, Pentium, and the Intel logo are trademarks or registered trademarks of Intel Corporation or its subsidiaries in the United States and other countries.

*Other names and brands may be claimed as the property of others.

Copyright © 2004, Intel Corporation

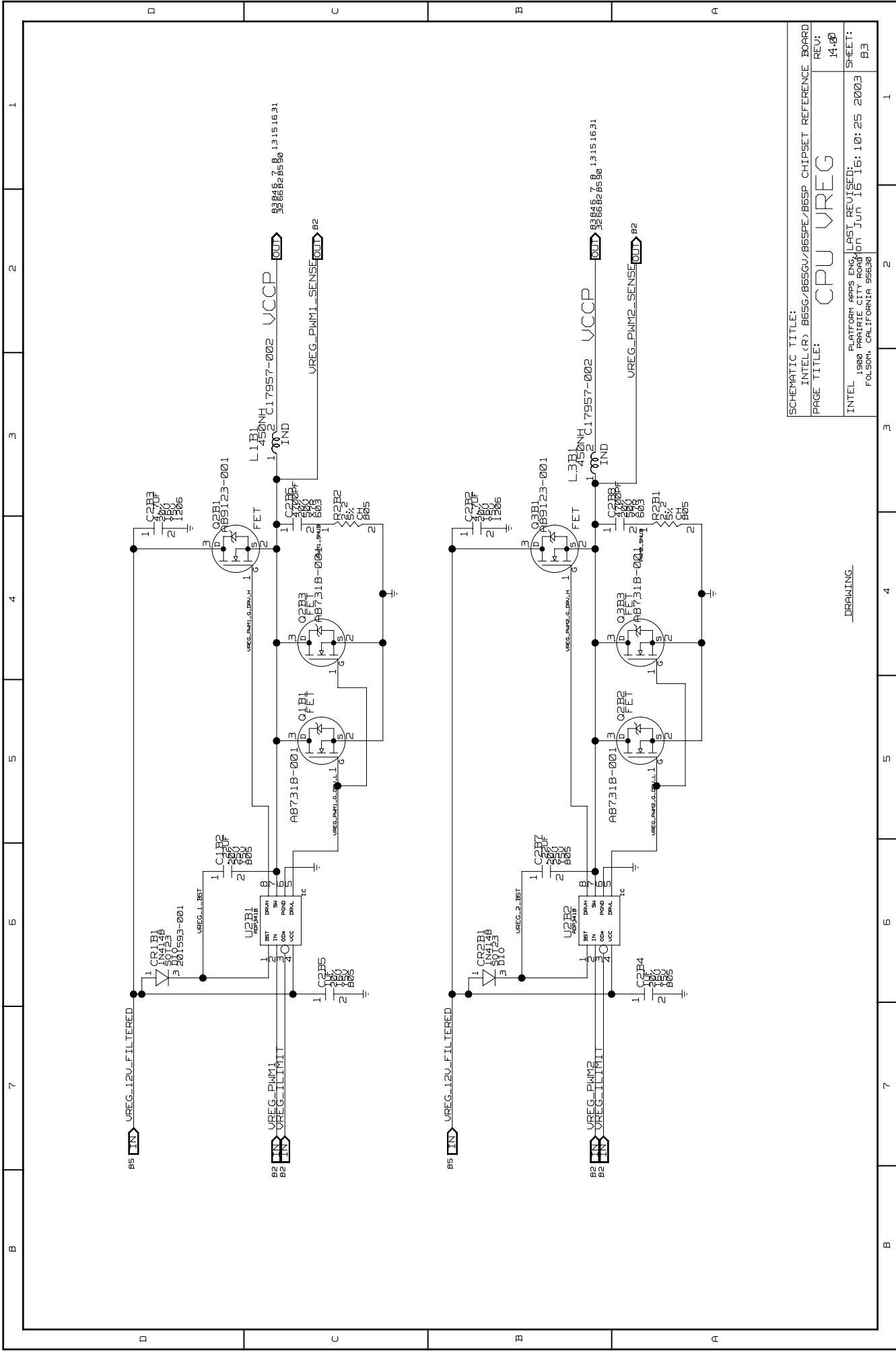
CP-1	B	7	6	5	4	3	2	1						
D	<p>INTEL(R) 865G/865GV/865P/865PE CHIPSET CUSTOMER REFERENCE BOARD SCHEMATICS ADDENDUM FOR THE INTEL(R) PENTIUM(R) 4 PROCESSOR ON 90 NM PROCESS WITH LOADLINE A PLATFORMS</p> <p>- 3 PHASE VR</p>													
C	<p>PAGE # COMPONENT / FUNCTION</p> <table border="1"> <tr> <td>1</td> <td>INDEX PAGE AND LEGAL DISCLAIMER</td> </tr> <tr> <td>2</td> <td>BLANK</td> </tr> <tr> <td>3, 4, 5, 6</td> <td>CPU VREG</td> </tr> </table>								1	INDEX PAGE AND LEGAL DISCLAIMER	2	BLANK	3, 4, 5, 6	CPU VREG
1	INDEX PAGE AND LEGAL DISCLAIMER													
2	BLANK													
3, 4, 5, 6	CPU VREG													
B	<p>INFORMATION IN THIS DOCUMENT IS PROVIDED IN CONNECTION WITH INTEL(R) PRODUCTS. NO LICENSE, EXPRESS OR IMPLIED, BY ESTOPPEL OR OTHERWISE, TO ANY INTELLECTUAL PROPERTY RIGHTS IS GRANTED BY THIS DOCUMENT. EXCEPT AS PROVIDED IN INTEL'S TERMS AND CONDITIONS OF SALE FOR SUCH PRODUCTS, INTEL ASSUMES NO LIABILITY WHATSOEVER, AND INTEL DISCLAIMS ANY EXPRESS OR IMPLIED WARRANTY, RELATING TO SALE AND/OR USE OF INTEL PRODUCTS INCLUDING LIABILITY OR WARRANTIES RELATING TO FITNESS FOR A PARTICULAR PURPOSE, MERCHANTABILITY, OR INFRINGEMENT OF ANY PATENT, COPYRIGHT OR OTHER INTELLECTUAL PROPERTY RIGHT. INTEL PRODUCTS ARE NOT INTENDED FOR USE IN MEDICAL, LIFE SAVING, OR LIFE SUSTAINING APPLICATIONS.</p> <p>INTEL MAY MAKE CHANGES TO SPECIFICATIONS AND PRODUCT DESCRIPTIONS AT ANY TIME WITHOUT NOTICE.</p> <p>DESIGNERS MUST NOT RELY ON THE ABSENCE OR CHARACTERISTICS OF ANY FEATURES OR INSTRUCTIONS MARKED "RESERVED" OR "UNDEFINED". INTEL RESERVES THESE FOR FUTURE DEFINITION AND SHALL HAVE NO RESPONSIBILITY WHATSOEVER FOR CONFLICTS OR INCOMPATIBILITIES ARISING FROM FUTURE CHANGES TO THEM.</p> <p>THE INTEL(R) PENTIUM(R) 4 PROCESSOR AND THE INTEL(R) 865G/865GV/865P/865PE CHIPSET PLATFORM MAY CONTAIN DESIGN DEFECTS OR ERRORS KNOWN AS ERRATA WHICH MAY CAUSE THE PRODUCT TO DEVIATE FROM PUBLISHED SPECIFICATIONS. CURRENT CHARACTERIZED ERRATA ARE AVAILABLE ON REQUEST.</p> <p>CONTACT YOUR LOCAL INTEL SALES OFFICE OR YOUR DISTRIBUTOR TO OBTAIN THE LATEST SPECIFICATIONS AND BEFORE PLACING YOUR PRODUCT ORDER.</p> <p>COPIES OF DOCUMENTS WHICH HAVE AN ORDERING NUMBER AND ARE REFERENCED IN THIS DOCUMENT, OR OTHER INTEL LITERATURE, MAY BE OBTAINED FROM:</p> <p>INTEL CORPORATION WWW.INTEL.COM OR CALL 1-800-548-4725</p> <p>INTEL AND PENTIUM 4 ARE TRADEMARKS OR REGISTERED TRADEMARKS OF INTEL CORPORATION OR ITS SUBSIDIARIES IN THE UNITED STATES AND OTHER COUNTRIES. *OTHER NAMES AND BRANDS MAY BE CLAIMED AS THE PROPERTY OF OTHERS.</p>													
A	<p>SCHEMATIC TITLE: INTEL(R) 865G/865GV/865P/865PE CHIPSET REFERENCE BOARD PAGE TITLE: TITLE PAGE REV: 1.0 SHEET: 1 INTEL PLATFORM APPS ENG. LAST REVISED: Wed Jan 14 14:31:54 2004 1900 PRAIRIE CITY ROAD FOLSOM, CALIFORNIA 95630</p> <p>DRAWING</p>													

CP-1	B	7	6	5	4	3	2	1	
D	C	B	A						A

THIS PAGE LEFT INTENTIONALLY BLANK

SCHEMATIC TITLE:	
INTEL (R) B6SG/B6SGV/B6SPE/B6SP CHIPSET REFERENCE BOARD	REV: 1.0
PAGE TITLE:	
INTEL PLATFORM APPS ENG. LAST REVISED: Wed Jan 14 14:29:41 2004	SHEET: 2
1900 PRAIRIE CITY ROAD FOLSOM, CALIFORNIA 95630	

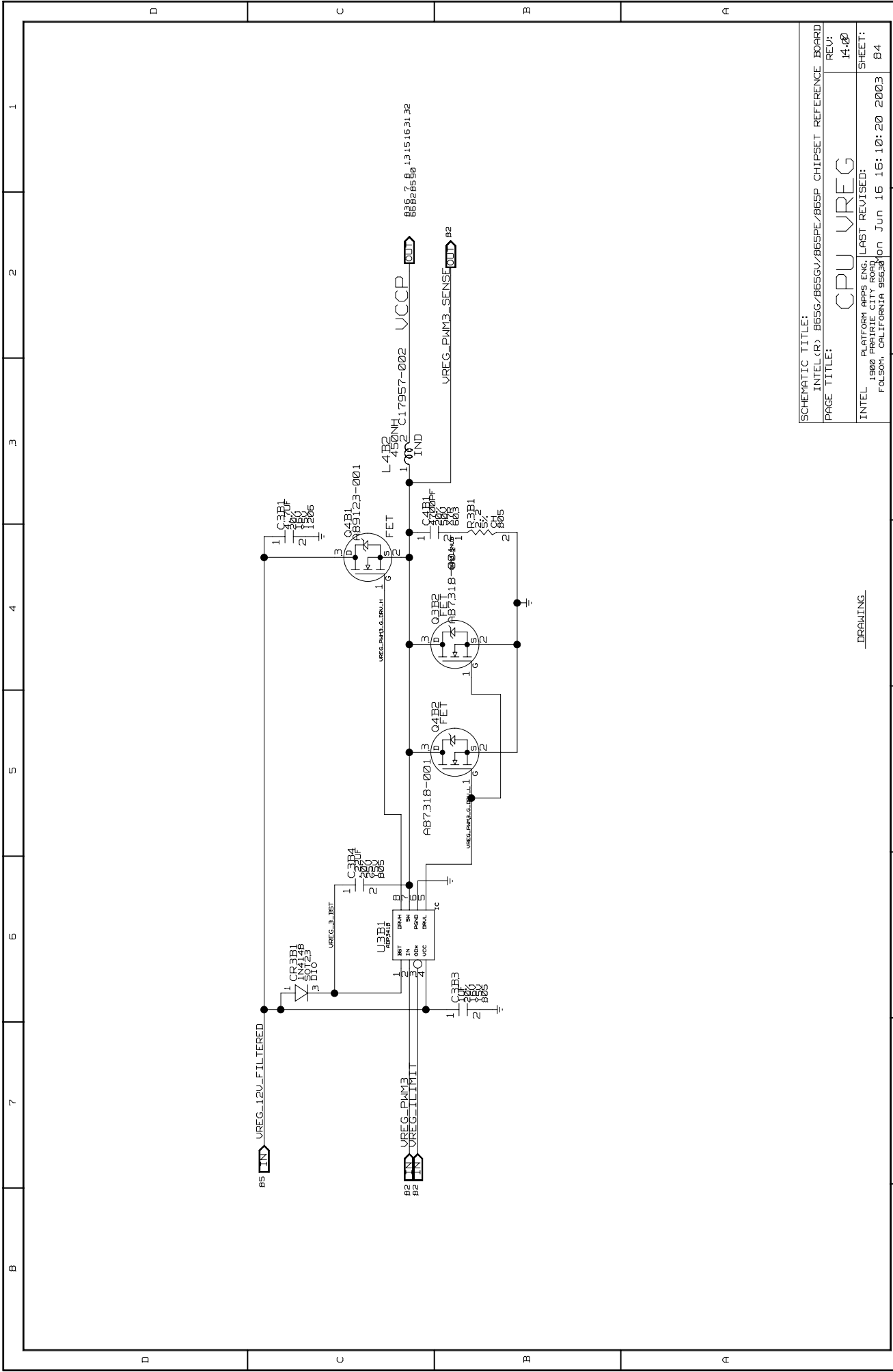
DRAWING



SCHEMATIC TITLE:
 INTEL (R) B65G/B65GV/B65PE/B65P CHIPSET REFERENCE BOARD
 PAGE TITLE: CPU VREG
 REV: 14.00
 SHEET: 8.3
 INTEL PLATFORM APPS ENG. LAST REVISED:
 1900 PRAIRIE CITY ROAD JUN 16 16: 10: 25 2003
 FOLSOM, CALIFORNIA 95630

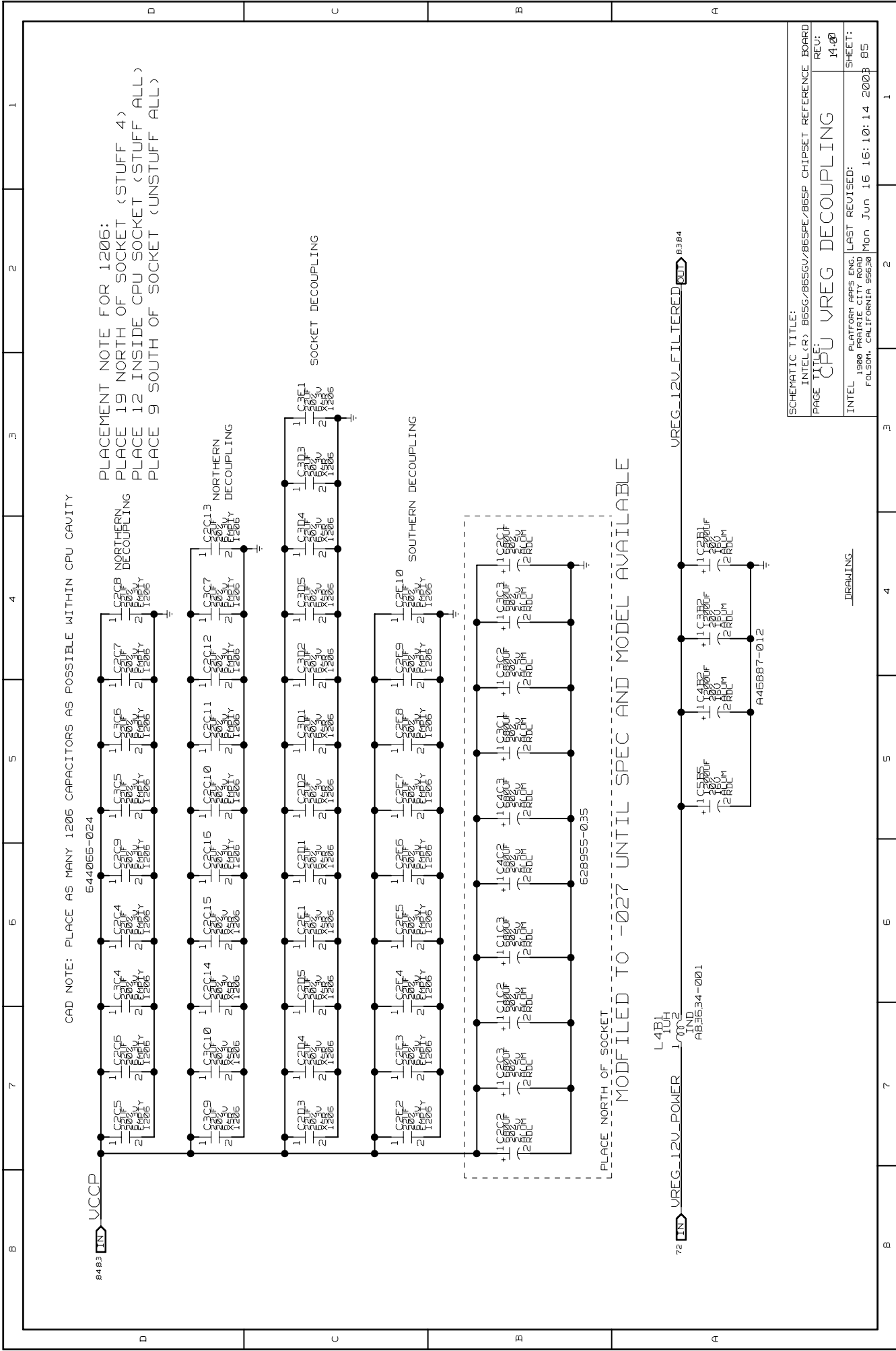
—DRAWING—

1 2 3 4 5 6 7 8



SCHEMATIC TITLE:	
INTEL (R) B65G/B65GV/B65PE/B65P CHIPSET REFERENCE BOARD	
PAGE TITLE:	REV:
CPU VREG	14.00
INTEL PLATFORM APPS ENG. LAST REVISED:	
1900 PRAIRIE CITY ROAD	
FOLSOM, CALIFORNIA 95630	
On Jun 15 16: 10: 20 2003	SHEET:
	B4

DRAWING



CAD NOTE: PLACE AS MANY 1206 CAPACITORS AS POSSIBLE WITHIN CPU CAVITY

644055-024

PLACE NOTE FOR 1206:
 PLACE 19 NORTH OF SOCKET (STUFF 4)
 PLACE 12 INSIDE CPU SOCKET (STUFF ALL)
 PLACE 9 SOUTH OF SOCKET (UNSTUFF ALL)

PLACE NORTH OF SOCKET
 MODIFIED TO -027 UNTIL SPEC AND MODEL AVAILABLE

72 IN VREG_12V_POWER J702
 L4B1 ITH
 IND AB3634-001

VREG_12V_FILTERED_001 83B4

+1C3B5 2500UF 1206
 +1C3B2 2500UF 1206
 +1C3B1 2500UF 1206
 A46687-012

SCHEMATIC TITLE:	
INTEL (R) B55G/B65G/B65PE/B65P CHIPSET REFERENCE BOARD	
PAGE TITLE:	REV:
CPU VREG DECOUPLING	14.00
INTEL PLATFORM APPS ENG. LAST REVISED:	
1900 PRAIRIE CITY ROAD Mon Jun 16 16:10:14 2003 85	
FOLSOM, CALIFORNIA 95630	

DRAWING