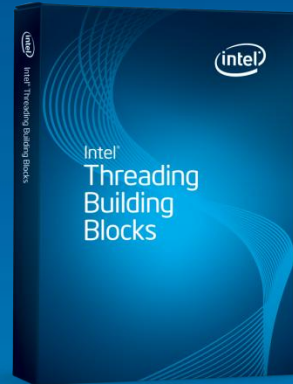
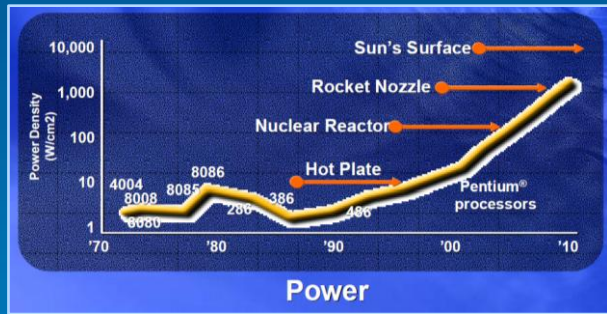
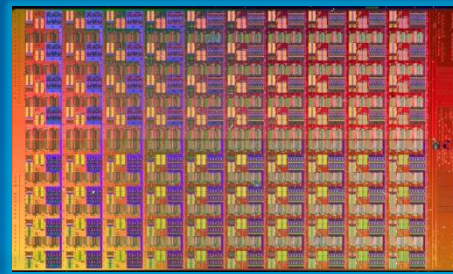


Timeline of Many-Core at Intel

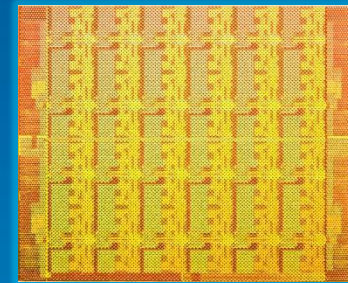
Era of Tera CTO Keynote & "The Power Wall"



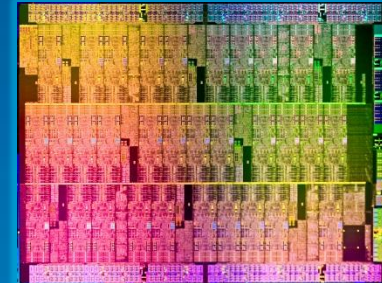
Teraflops Research Processor (Polaris)



Single-chip Cloud Computer (Rock Creek)



Aubrey Isle & MIC Architecture



Today's Launch



Many-core Technology Strategic Planning

Many-core R&D agenda & BU Larrabee Development

Tera-scale Computing Research Program (80+ projects)

Workloads, simulators, software & insights from Intel Labs

Universal Parallel Computing Research Centers

1 Teraflops SGEMM on Larrabee @ SC'09

Many-core Applications Research Community

Xeon Phi enters Top500 at #150. 1st Teraflop single-node DP LINPACK



Intel's Many-Core Journey

- Many-core challenge galvanized best minds from product groups & labs

