

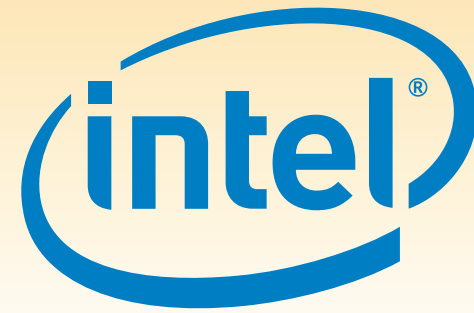
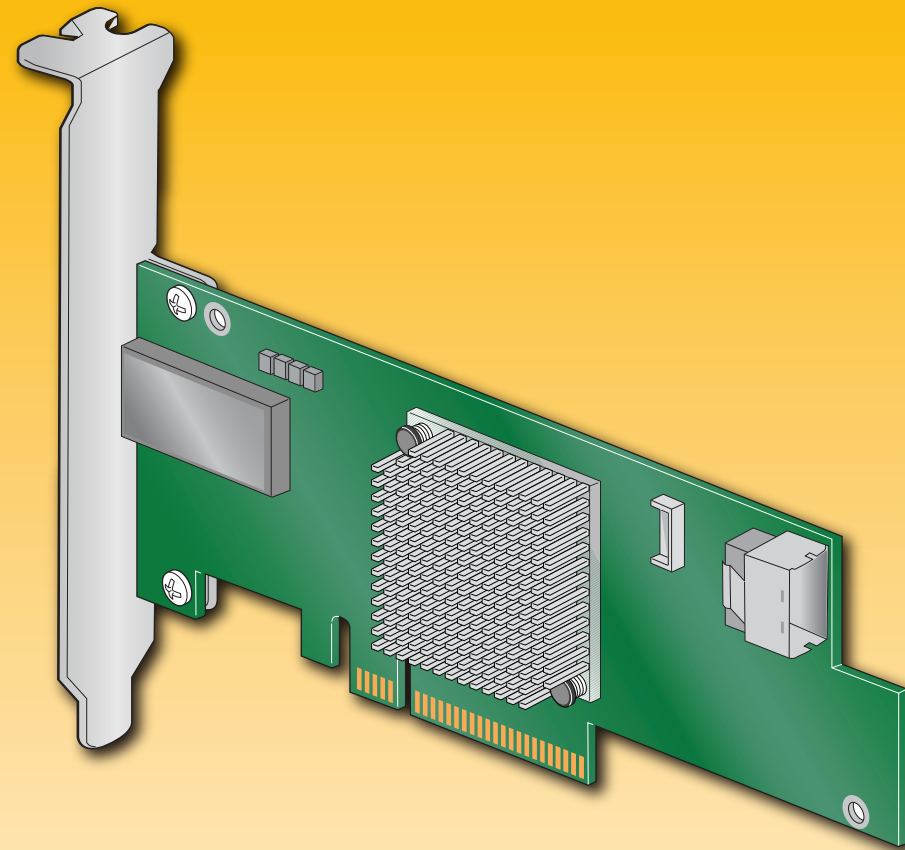
Intel® RAID Controller RS25FB044 Quick Start User's Guide

This guide contains step-by-step instructions for installing the Intel® RAID Controller RS25FB044 and information on using the BIOS setup utility to configure a single logical drive array and install the driver into the operating system. For more advanced RAID configurations, or to install with other operating systems, please refer to the *Hardware User's Guide*.

These guides and other supporting documents (including a list of supported server boards) are also located on the web at <http://www.intel.com>.

If you are not familiar with ESD (Electrostatic Discharge) procedures used during system integration, see your *Hardware Guide* for complete ESD procedures. For more details on Intel® RAID controllers, see: www.intel.com/go/serverbuilder.

Read all cautions and warnings first before starting your RAID Controller integration.



What you will need to begin

- SAS 2.0 or SATA III hard disk drives (backward compatible to support SAS 1.0 or SATA II hard disk drives)
- Intel® RAID Controller RS25FB044
- Server board with a x8 or x16 PCI Express* slot (this controller is designed to meet the x8 PCI Express* Generation 3 specification and is backward compatible with generation 2 or 1 slots)
- Resource CD, which is shipped with systems or boards
- Operating system installation media: Microsoft Windows Server 2003*, Microsoft Windows Server 2008*, Microsoft Windows 7*, Microsoft Windows Vista*, Red Hat* Enterprise Linux, or SUSE* Linux Enterprise Server and VMware* ESX Server 4.

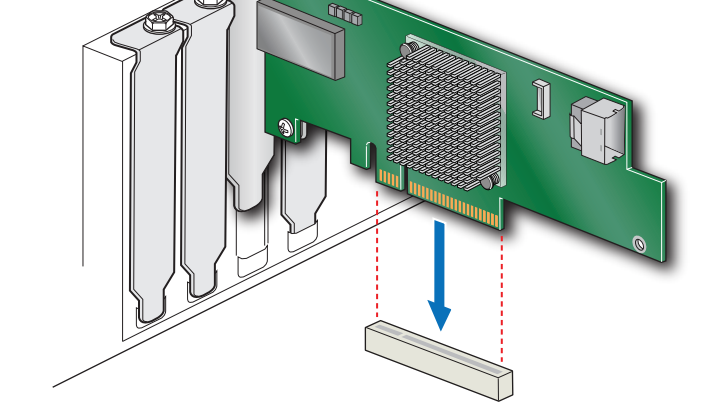
Notes: The card will support PCI Express* Revision 3.0 at launch.

1 Check the Bracket Height

- Determine whether the full-height bracket will fit in the server's PCI back plate.
- Your RAID controller ships with the full-height bracket. If the low-profile bracket is required, unscrew the two fasteners holding the green board to the silver bracket.
- Remove the bracket.
- Line up the low-profile bracket with the board, making sure the two holes align.
- Replace and tighten the two screws.

2 Install the RAID Module

- Power down the system and disconnect the power cord.
- Remove the system cover and any other pieces to access the PCI Express* slot.
- Firmly press the RAID module into an available x8 or x16 PCI Express* Slot.
- Secure the RAID module bracket to the system back panel.



Building Value with Intel® Server Products, Programs and Support

Get the high-value server solutions you need by taking advantage of the outstanding value Intel® provides to system integrators:

- High-quality server building blocks
- Extensive breadth of server building blocks
- Solutions and tools to enable e-Business
- Worldwide 24x7 technical support (AT&T Country Code + 866-655-6565)¹
- World-class service, including a three-year limited warranty and Advanced Warranty Replacement¹

For more information on Intel's added-value server offerings, visit the Intel® ServerBuilder website at: www.intel.com/go/serverbuilder.

Intel® ServerBuilder is your one-stop shop for information about all of Intel's Server Building Blocks such as:

- Product information, including product briefs and technical product specifications
- Sales tools, such as videos and presentations
- Training information, such as the Intel® Online Learning Center
- Support Information and much more

¹Available only to Intel® Channel Program Members, part of Intel® e-Business Network.

Warning

Read all caution and safety statements in this document before performing any of the instructions. Also see the *Intel® Server Board and Server Chassis Safety Information* document at: <http://www.intel.com/support/motherboards/server/sb/cs-010770.htm> for complete safety information.

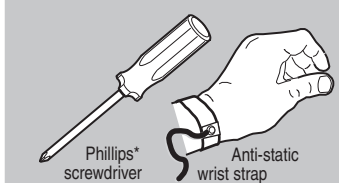
Warning

Installation and service of this product should only be performed by qualified service personnel to avoid risk of injury from electrical shock or energy hazard.

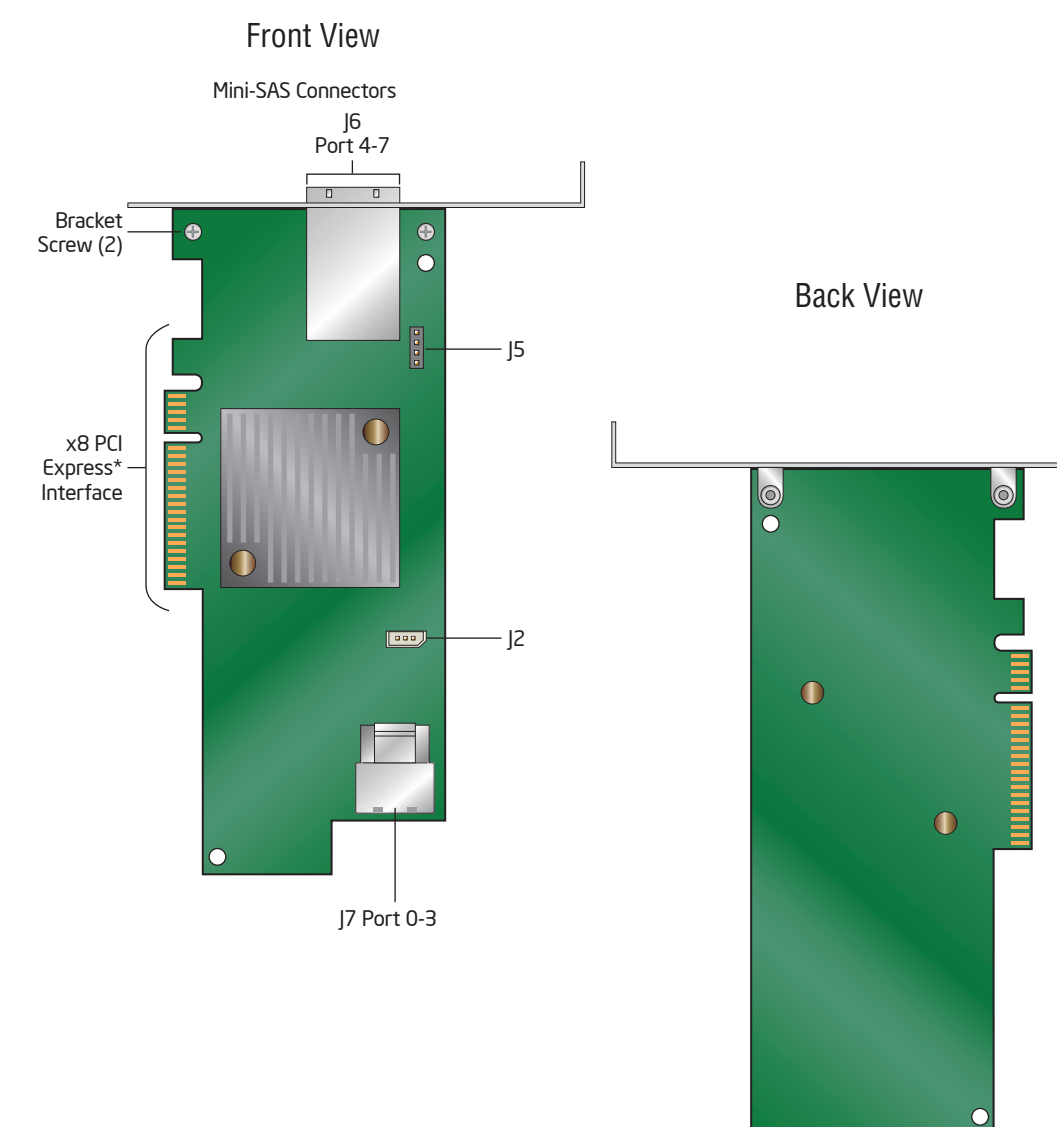
Caution

Observe normal ESD (Electrostatic Discharge) procedures during system integration to avoid possible damage to server board and/or other components.

Tools Required



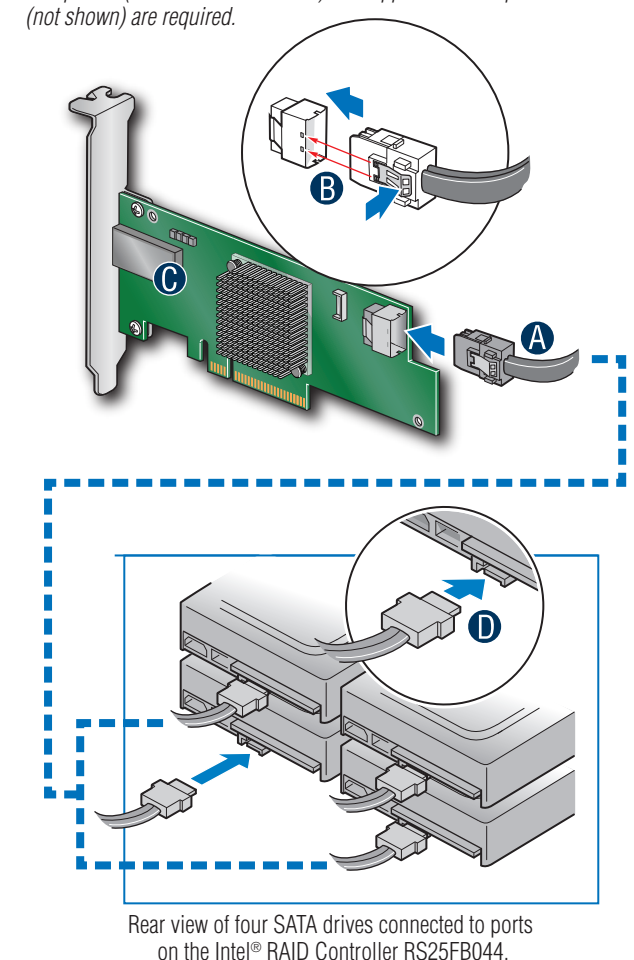
Intel® RAID Controller RS25FB044 Reference Diagram



3 Connect the RAID Module

- For internal drives, connect the SFF8087 miniSAS end of a cable to the onboard internal SFF8087 miniSAS connector.
- Push the cable into the silver connector until it makes a slight click.
- For external drives, connect the SFF8088 miniSAS end of an external cable to the onboard SFF8088 miniSAS connector on the bracket of the Intel(R) RAID Controller RS25FB044. Push the cable into the external connector until it makes a slight click. The SAS cable is not shipped together with the controller. Refer to the target device documentation for devices to select the correct SAS cable.
- Connect the other ends of the cables to SATA drives or to the ports on a SATA or SAS backplane.

Note: Both non-expander backplanes (one cable per drive) and expander backplanes (one or two total cables) are supported. Drive power cables (not shown) are required.

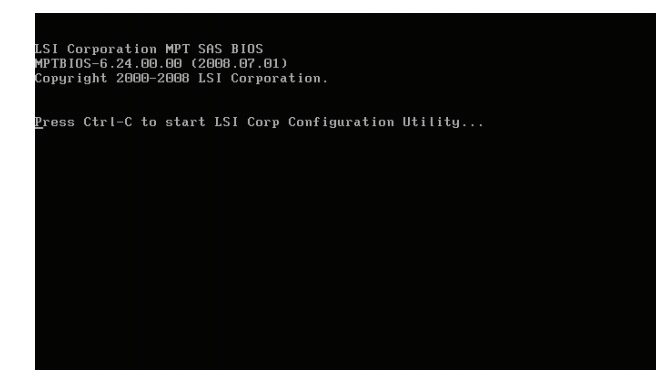


Rear view of four SATA drives connected to ports on the Intel® RAID Controller RS25FB044.

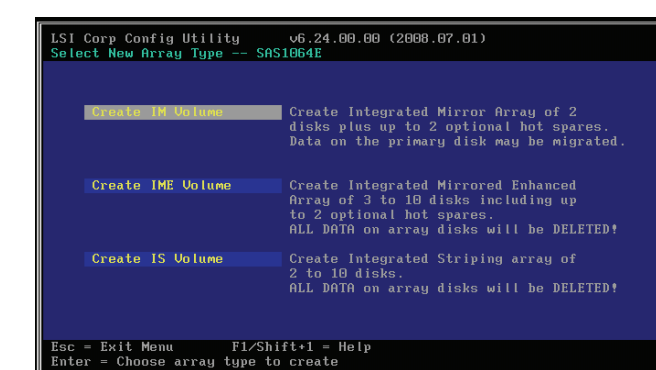
4 Use the LSI MPT SAS BIOS Configuration Utility* to Create a RAID Virtual Drive

NOTE: As necessary, see "Choosing the Right RAID Level" on side 2 of this Quick Start User's Guide for a brief description of RAID levels.

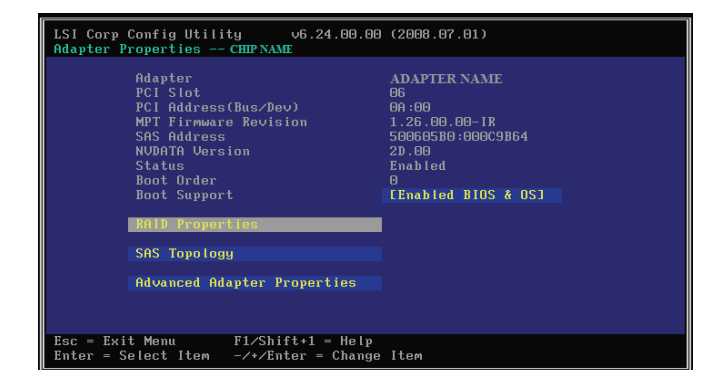
- Power on the system and press <Ctrl> + <C> when the screen below is displayed.



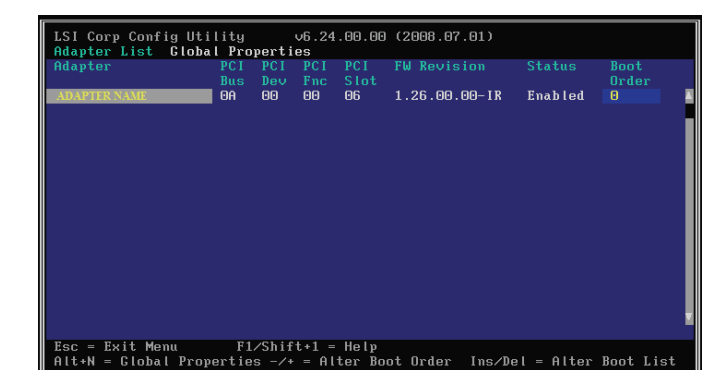
- In the Adapter List Global Properties window select RS25FB044 in the Adapter column and press <Enter>.



- Highlight RAID Properties and press <Enter>.



- On the Select New Array Type screen, select the appropriate configuration, for example Create 1M Volume, and press <Enter>.



G59534-001



For more information on the jumpers referenced in this diagram, refer to *User Guide* located on the web at: http://www.intel.com/p/en_US/support/server/.

Intel is a registered trademark of Intel Corporation or its subsidiaries in the United States and other countries. *Other names and brands may be claimed as the property of others. Copyright © 2012, Intel Corporation. All rights reserved.