

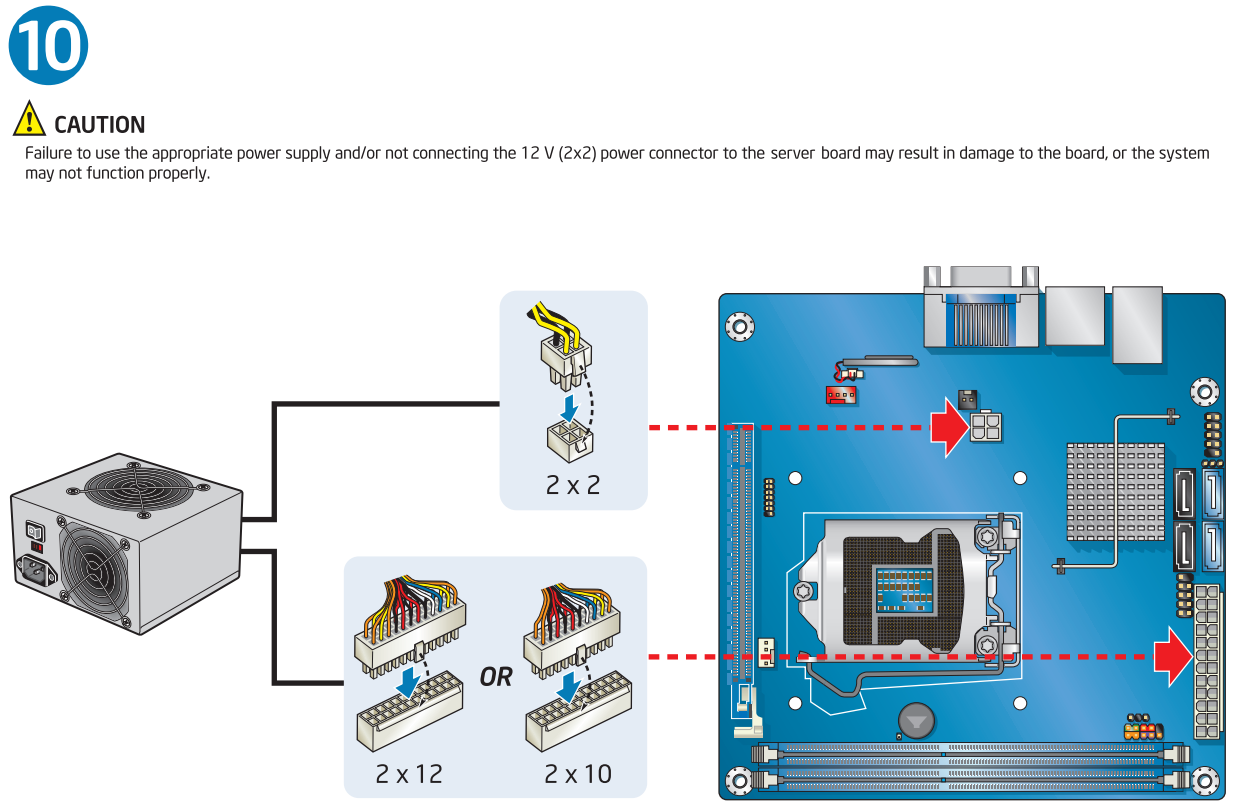
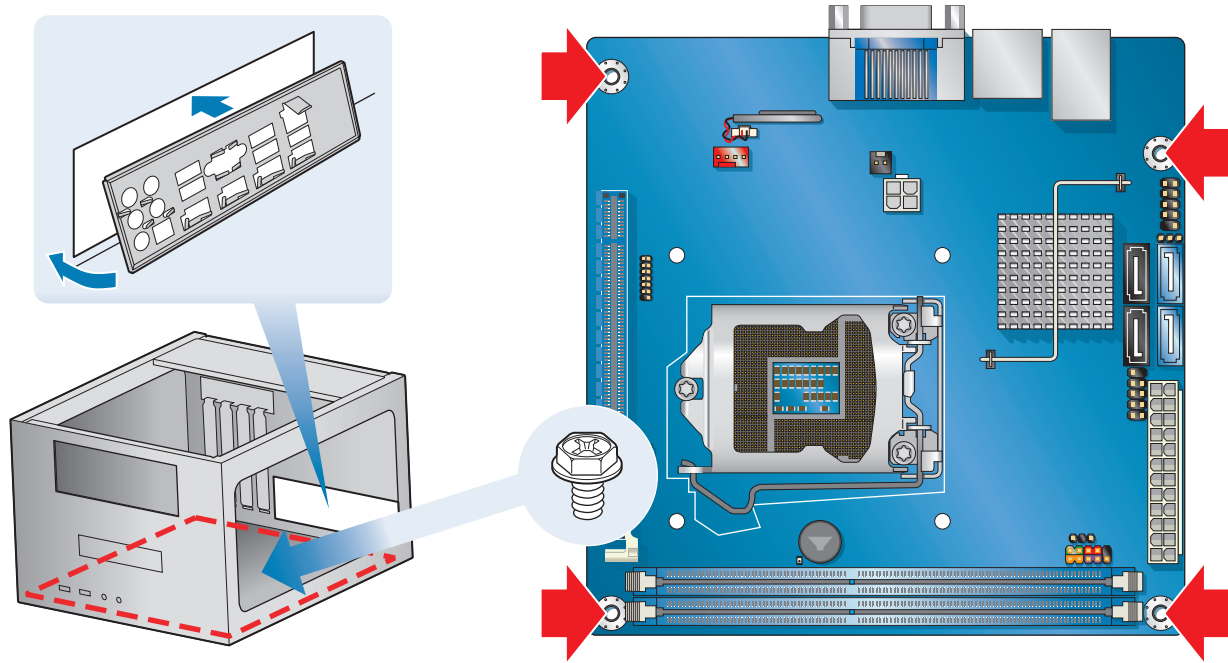
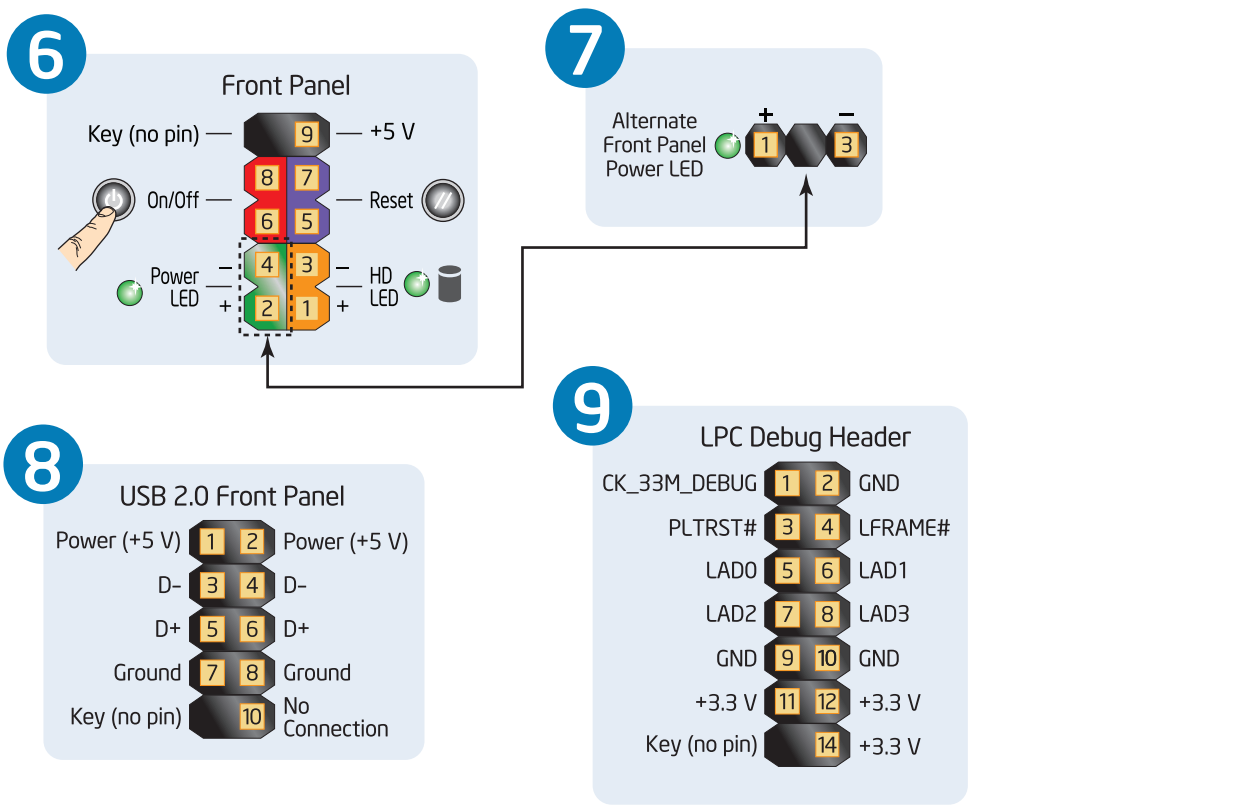
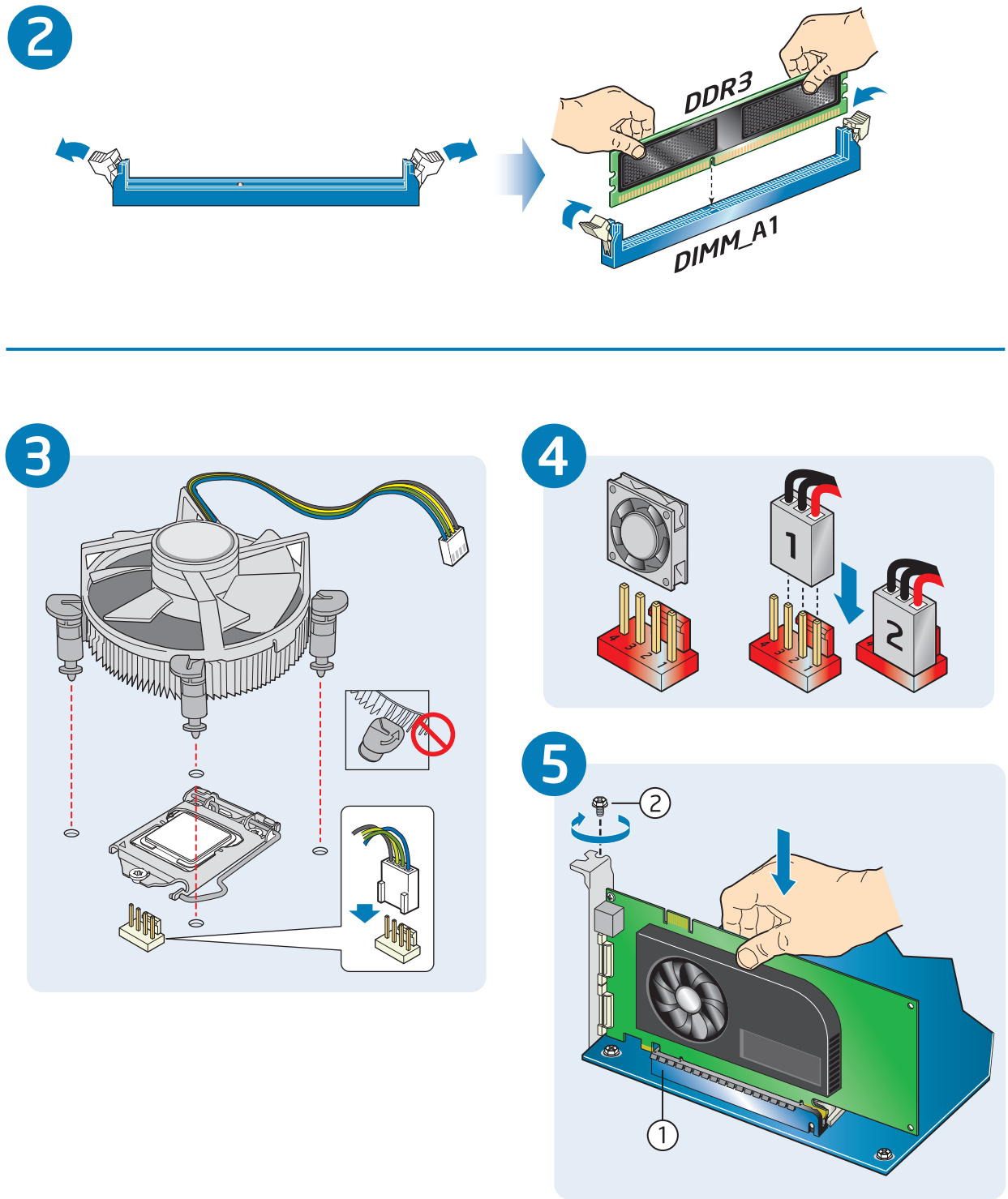
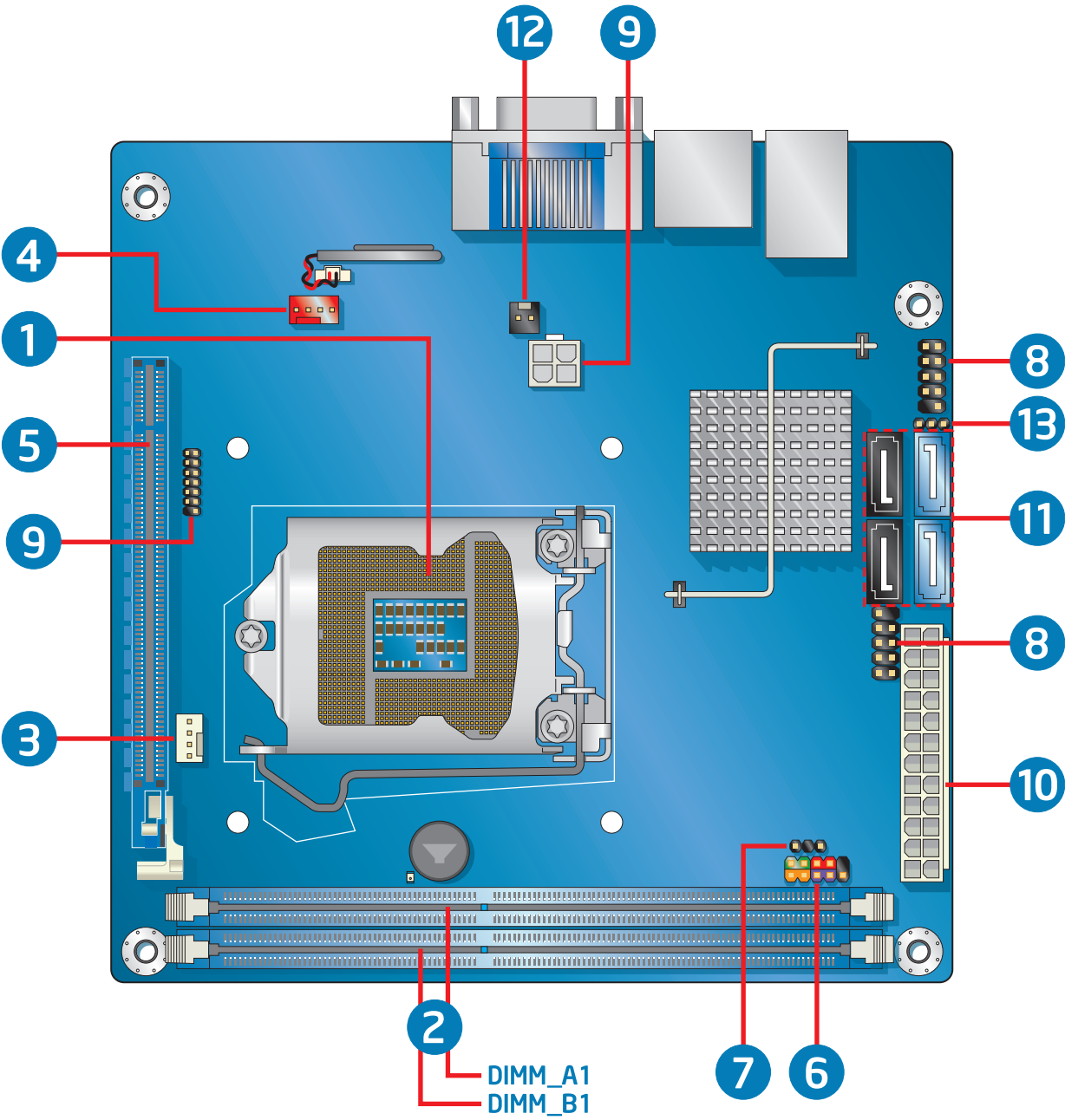
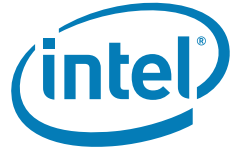
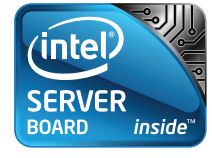
Intel® Server Board S1200KP Quick Reference

Thank you for buying the Intel® Server Board S1200KP. The following information will help you integrate your new server board into a server chassis.

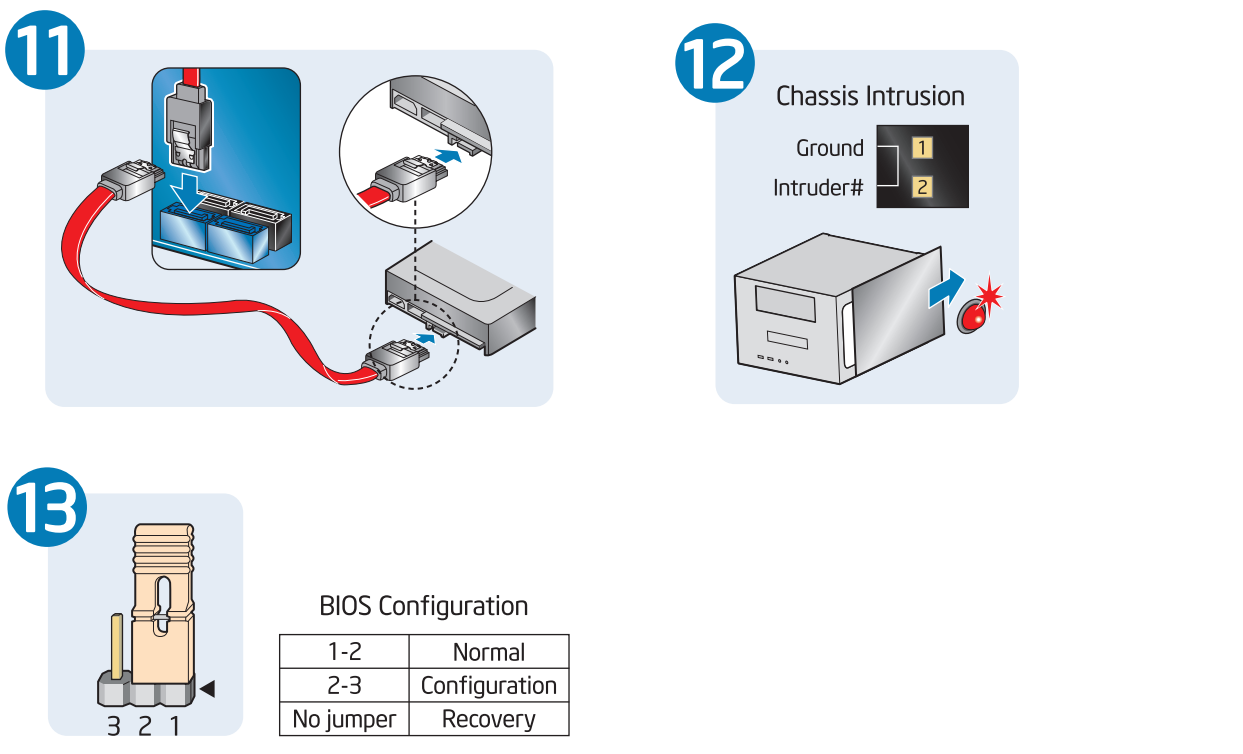
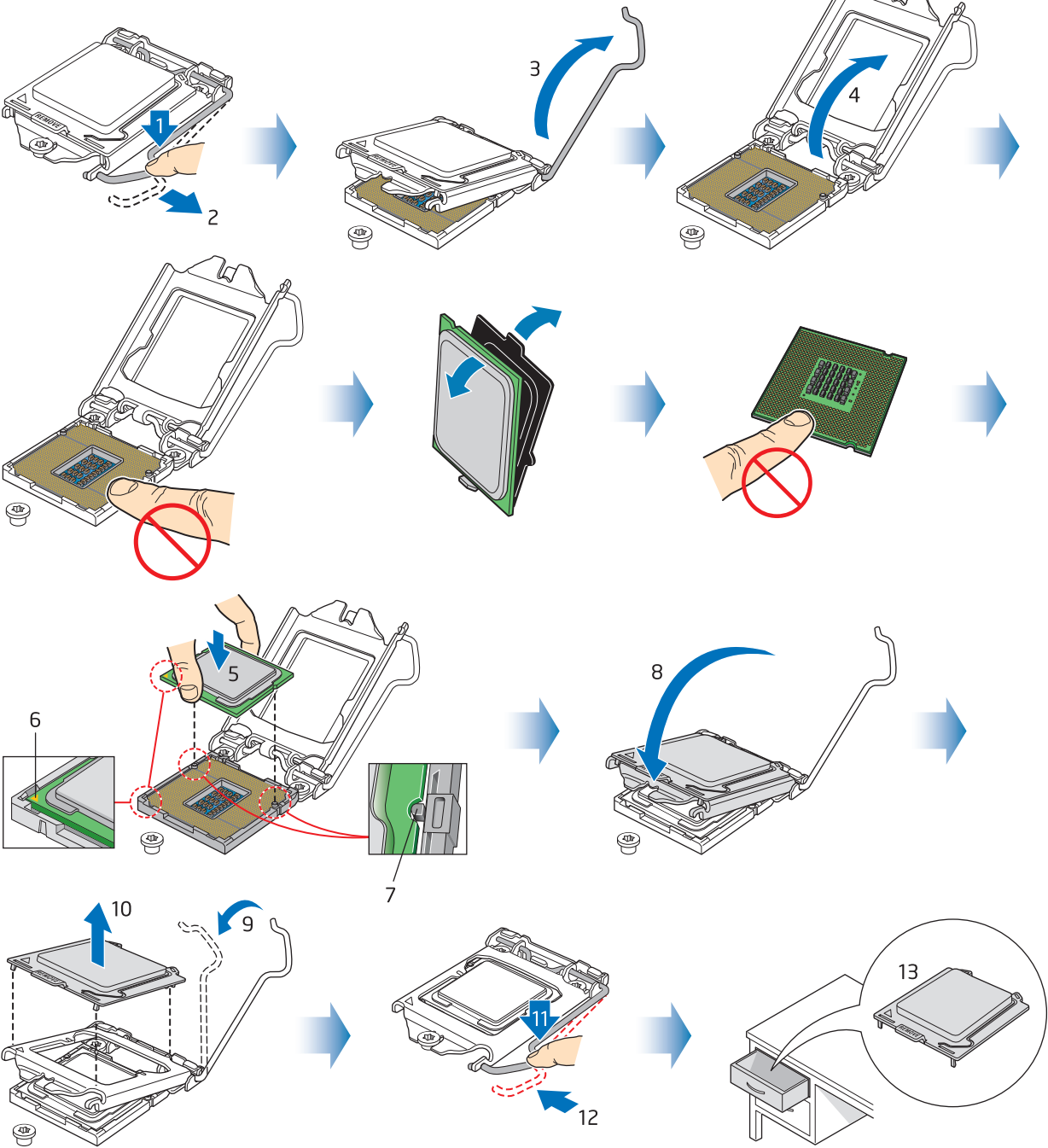
When installing the server board into a reference chassis, refer to the reference chassis instructions.

If you are not familiar with ESD (Electrostatic Discharge) procedures used during system integration, please see the Intel® Server Board S1200KP Product Guide, available on the Driver CD or at <http://www.intel.com/support/motherboards/server>.

Read all cautions and warnings first before starting your server system integration.



1 Intel® processors in the LGA1155 package only. For processor compatibility go to: <http://processormatch.intel.com>.



13 BIOS Configuration

1-2	Normal
2-3	Configuration
No jumper	Recovery

