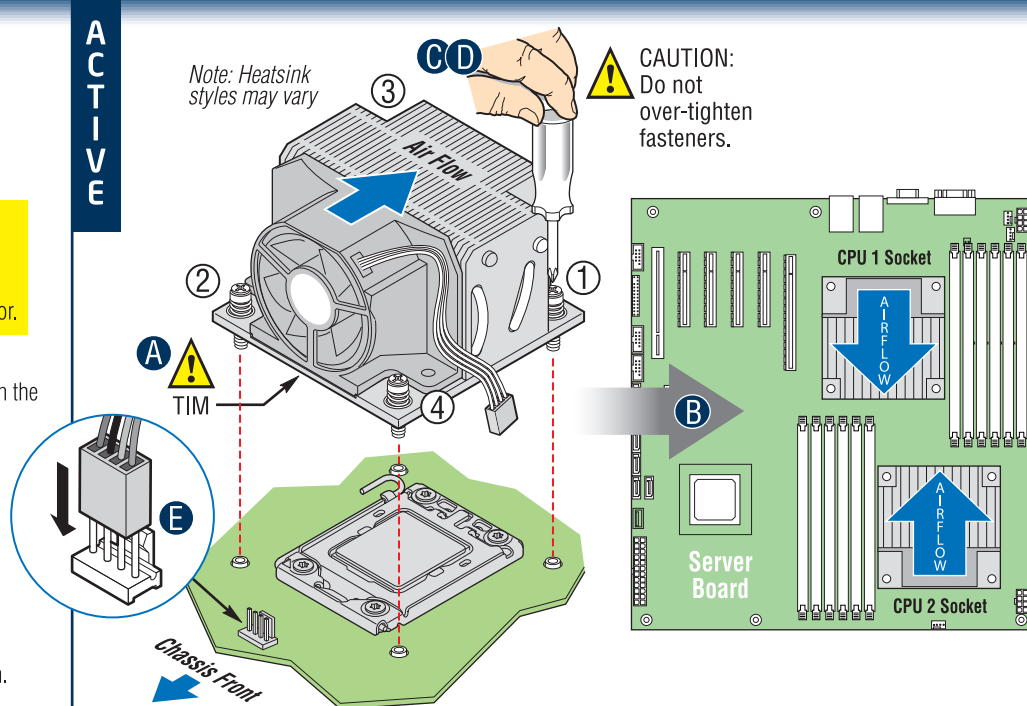


## 9 Install Heat Sink(s)

Active processor heat sink(s) is required in the Intel® Server System SC5650HCBRP.

**CAUTION:** The heat sink has thermal interface material (TIM) on the underside of it. Use caution so that you do not damage the thermal interface material. Use gloves to avoid sharp edges. A second heat sink is required for a second processor.

- A If a protective film covers the thermal interface material (TIM) on the underside of the heat sink, remove the protective film.
- B Align active heat sink(s) to let air flow go through to the center of the board.
- C Using a #2 Phillips® screwdriver, finger-tighten each fastener diagonally, according to the white-circled numbers.
- D Securely re-tighten each fastener again in the same order as performed in Step C.
- E Attach active heatsink fan power cable to server board as shown.

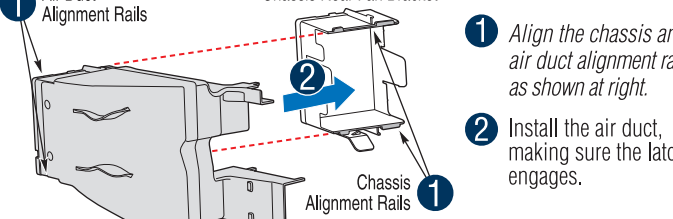


## 10 Install Fan Duct / System Fan Assembly

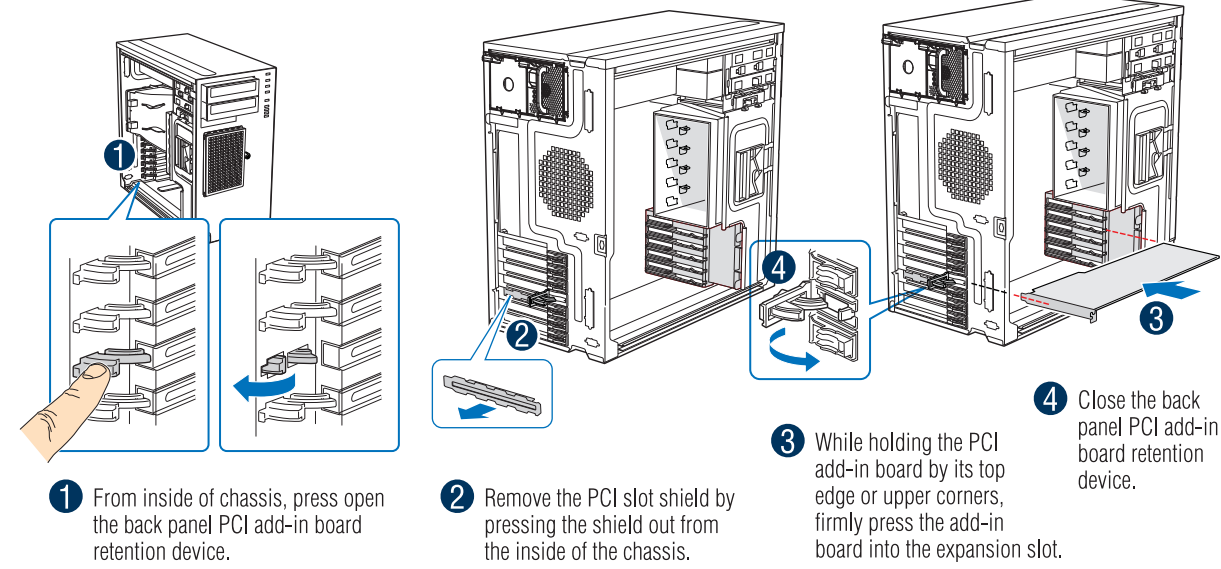
**Warning!** Remove the inlet filler board for dual processor configuration

**Inlet Filler Board Removal Detail**

**Air Duct Alignment Rails**

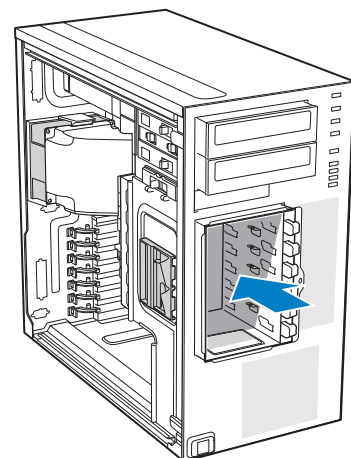


## 11 Install PCI Add-in Boards

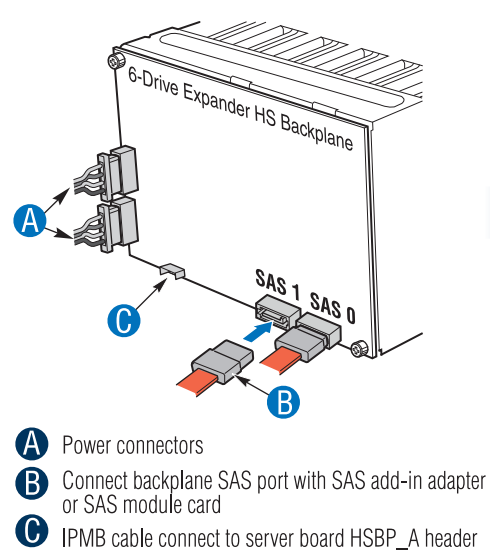


## 12 Reinstall Hot Swap Drive Cage

- 1 Slide the hot swap drive cage into the drive bay slot on the chassis. You should hear a click sound when the blue plastic retention mechanism locks into place.

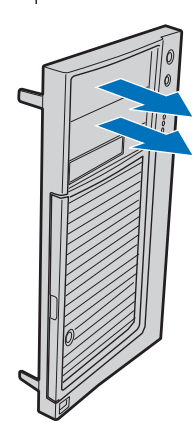


## 13 Connect Hot Swap Drive Cage Cables



## 14 Remove Filler Panels

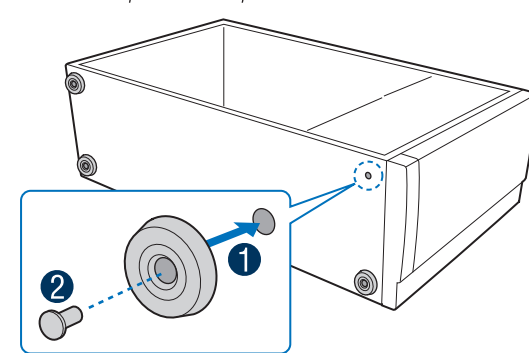
Remove the bezel filler panels for each drive you have installed. Release plastic tabs located at back side of bezel and pull out filler panels from front.



## 15 Install Feet (Pedestal Configuration Only)

*Note: This step applies to the pedestal version only. If you plan to configure your chassis as a rack mount system, go to Step 16.*

- 1 Insert rubber foot into chassis hole.
- 2 Secure foot by inserting pin through the rubber foot.

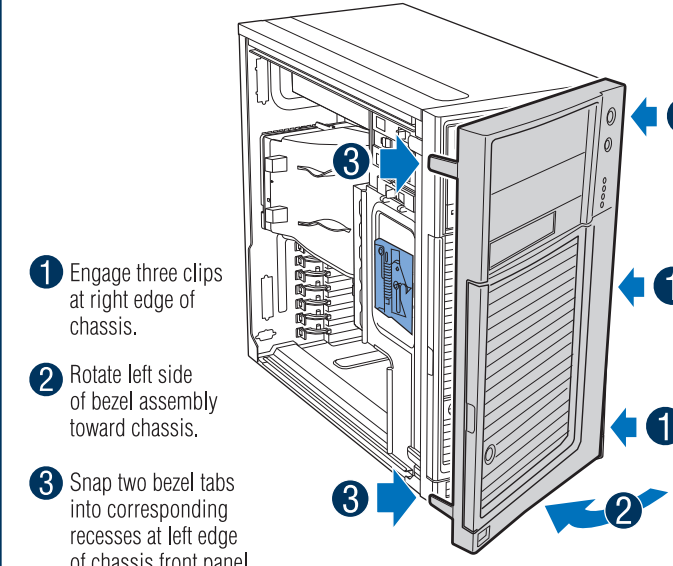


## 16 Install Rack Mount Kit (Optional)

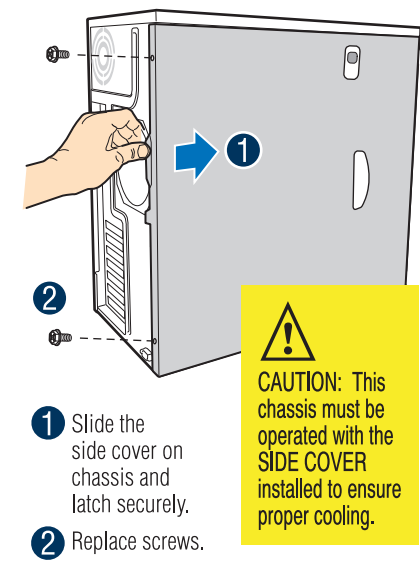
If you intend to configure your server as a pedestal system, disregard this step and proceed to Step 17.

If you intend to configure your server as a rack-mount system, go to the instructions that came with your Rack Mount Kit to complete your server assembly.

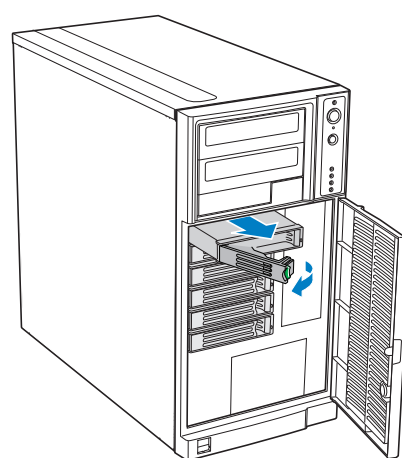
## 17 Install Front Bezel Assembly



## 18 Close System

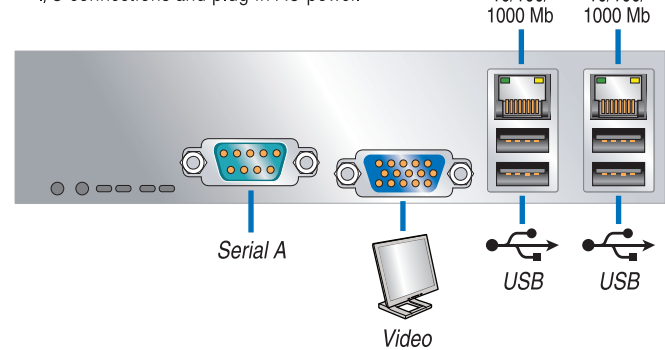


## 19 Install Hard Disk Drives



## 20 Finishing Up

Before installing your operating system, you must finish your chassis installation, make I/O connections and plug in AC power.



**CAUTION:** Power supply requires a 16-gauge power cord

## 21 Software • BIOS, Drivers, and Operating System Installation

**A. Confirm BIOS, BMC, ME, and FRUSDR Versions:** Look on the Server/System Management screen in the BIOS Setup Utility to determine the installed BIOS, BMC firmware, and FRUSDR versions. Compare these to the versions at: <http://support.intel.com/support/motherboards/server/s5520HC/>

If new versions are available, update the BIOS, BMC firmware, and FRUSDR on your server. See the Service Guide on the Intel® Server Deployment Toolkit CD for update instructions.

**B. Configure your RAID Controller:** Use the instructions provided with the RAID controller.

**C. Install your Operating System:** Use the instructions provided with the RAID controller and with the operating system.

**D. Install Operating System Drivers:** With the operating system running, insert the Intel® Server Deployment Toolkit CD. If using a Microsoft Windows® operating system, the Intel® Deployment Assistant (in the Deployment Toolkit CD) will autoun and allow you to select the appropriate drivers to install. On other operating systems, browse the CD folders to locate and install the driver files.

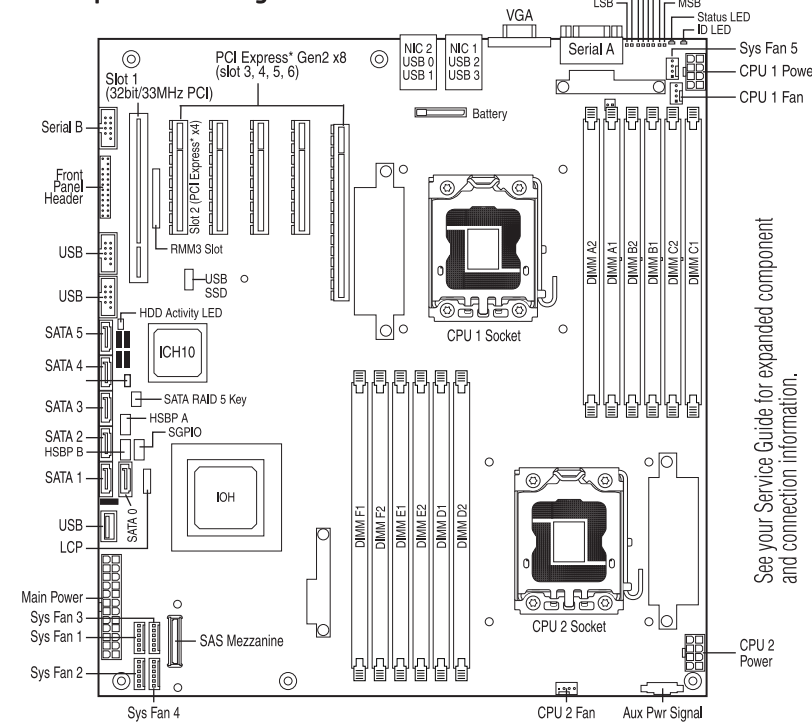
## Common Problems and Solutions

For a list of hardware components that have been tested with this system, see: <http://support.intel.com/support/motherboards/server/s5520HC/>

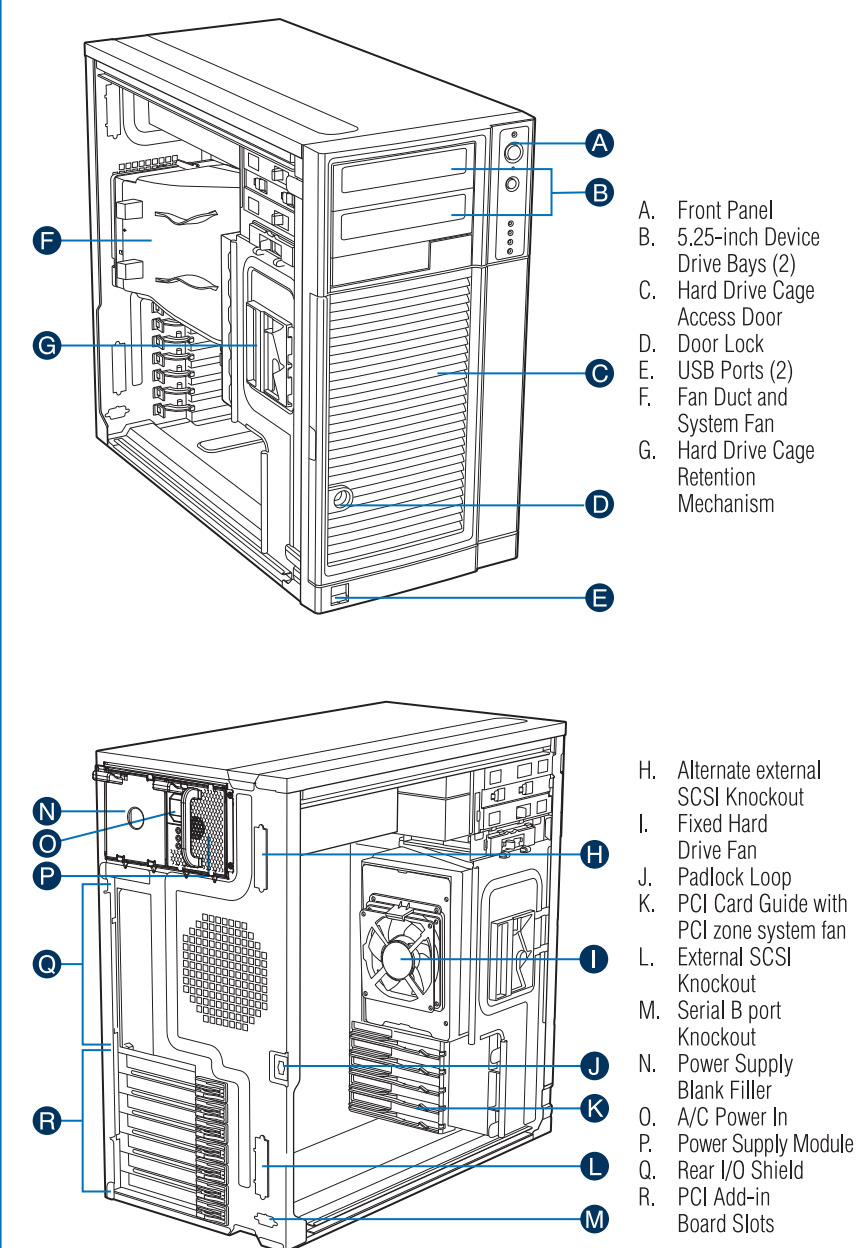
The system does not boot or show video at power-on:

- Check that all processor power connectors are plugged-in. Without these connections, the server cannot boot.
- Beep code 3 means you have bad memory; replace the faulty DDR3 DIMM(s).
- Remember, all DIMMs must be:
  - DDR3 800/1066/1333-compliant, 240-pin DIMMs.
  - No mixing of DDR3 RDIMMs and UDIMMs.
  - Installed from first slot of each channel.
- Install Quad-Rank DIMM from first slot of each channel.

## Intel® Server Board S5520HC Component Layout



## Chassis Features and Components

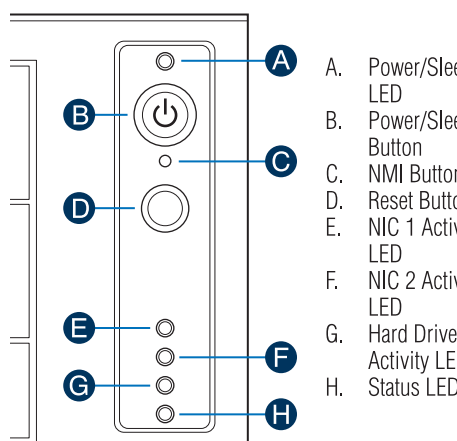


Accessories and Order Codes	
Intel® Server Chassis Rack Mount Kit	APP3RACKIT
Intel® Server Chassis SC5650 Product Maintenance Kit	APP1PMKIT
Intel® 2.5" Hard Drive Carrier Kit	AXX25DRVADPTR
Intel® Remote Management Module 3	AXXRMM3
Intel® SAS Entry RAID Module	AXX4SASM0D

A complete list of accessories and spares can be found at: <http://support.intel.com/support/motherboards/server/s5520HC/>

Chassis Fan Connection		
✓ = System Fan header used		Notes:
System Fan 1	✓	PCI Zone Chassis Fan
System Fan 2		
System Fan 3	✓	HDD Cage Fan
System Fan 4		
System Fan 5	✓	Rear Chassis Fan

## Front Panel Controls and Indicators



Available Documents	
Document Type	Content
Technical Product Specification	In-depth technical information
Spares and Configuration Guide	Supported accessories and spares list
Software and Drivers	Up-to-date firmware, driver and utility information

Additional Reference Documents available at: <http://support.intel.com/support/motherboards/server/s5520HC/>

