

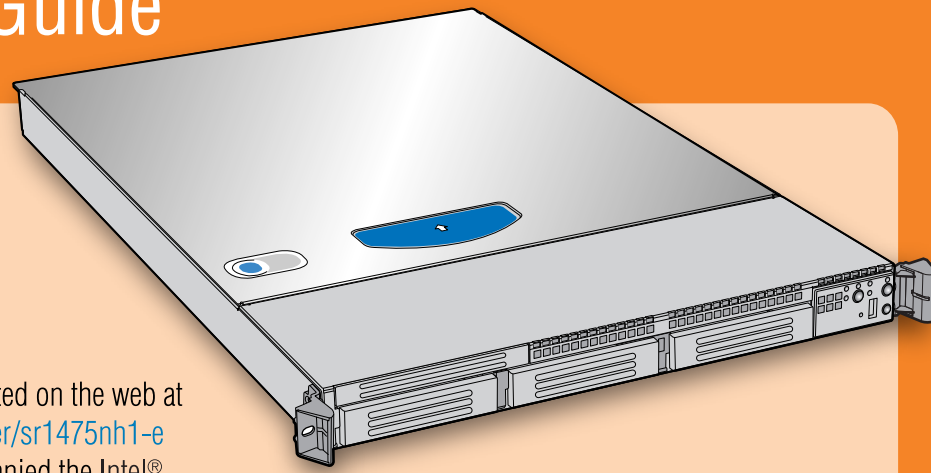


# Intel® Server Platform SR1475NH1-E Quick Start User's Guide

Thank you for buying an Intel® Server Platform. The following information will help you assemble your Intel® Server Platform and install components.

This guide and other supporting documents are located on the web at <http://support.intel.com/support/motherboards/server/sr1475nh1-e>. You can also find the guides on the CD that accompanied the Intel® Server Platform SR1475NH1-E.

If you are not familiar with ESD (Electrostatic Discharge) procedures used during system integration, complete ESD procedures are described in your User Guide. For more details on Intel® Server Platforms, please see: <http://www.intel.com/go/serverbuilder>



## Warning



Read all caution and safety statements in this document before performing any of the instructions. Also see the *Intel® Server Board and Server Chassis Safety Information* document at: <http://support.intel.com/support/motherboards/server/sb/cs-010770.htm> for complete safety information.

## Warning



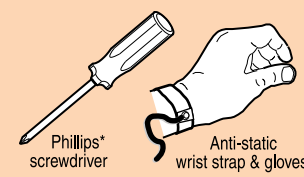
Installation and service of this product to be performed only by qualified service personnel to avoid risk of injury from electrical shock or energy hazard.

## Caution

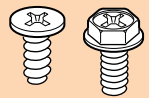


Observe normal ESD (Electrostatic Discharge) procedures during system integration to avoid possible damage to server board and/or other components.

## Tools Required



## Fastener Identification Guide



## Minimum Hardware Requirements

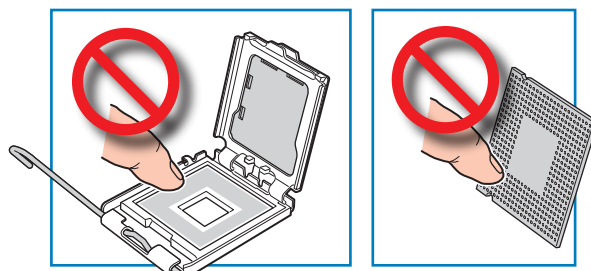
To avoid integration difficulties, make sure your system meets the minimum requirements below:

- Processor: One Intel® Pentium® D or one Intel® Pentium® 4 processor. Minimum 2.8 GHz.
- Memory: Minimum of one 256 MB, DDR2 400/533/667 compliant unbuffered, ECC or non-ECC, SPD SDRAM 240-pin gold DIMM.
- Riser (optional PCI-Express or PCI-X): Full Height Riser

## 6 Install the Processor

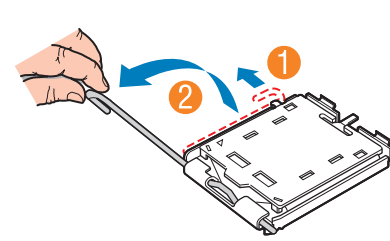
### Notes and Cautions:

1. When unpacking a processor, hold by the edges only to avoid touching the pins.
2. This server board has a "zero-insertion force" socket. If processor does not drop easily into socket, make sure lever is in the full-open position.



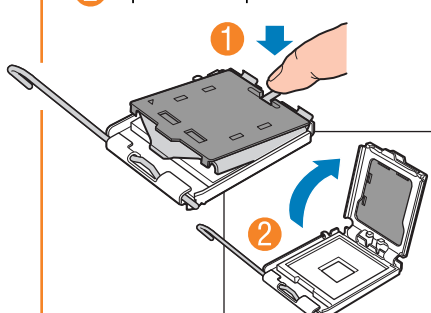
### A. Open the Socket Lever

- 1 Push the lever handle down and away from the socket to release it.
- 2 Pull the lever and open all the way.



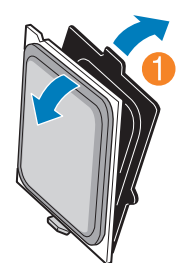
### B. Open the Load Plate

- 1 Push the rear tab with your finger tip to bring the front end of the load plate up slightly.
- 2 Open the load plate as shown.



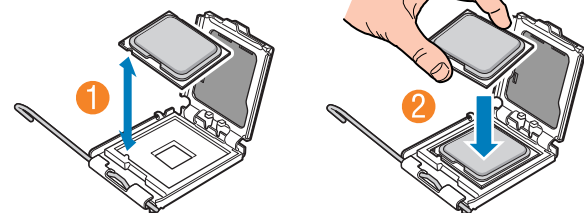
### C. Remove the Processor Protective Cover

- 1 Take the processor out of the box and remove the protective shipping cover.



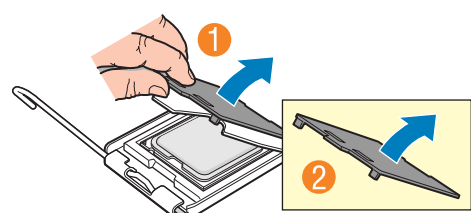
### D. Install the Processor

- 1 Orient the processor with the socket so that the processor cutout matches the socket notch.
- 2 Install the processor as shown.



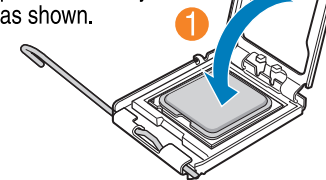
### E. Remove Socket Protective Cover

- 1 Grasp the socket protective cover tab and pull away from the load plate as shown.
- 2 Remove the socket protective cover and store for future use.

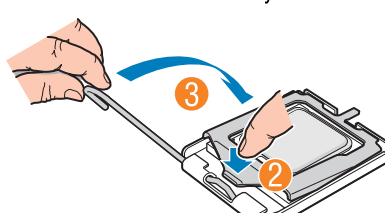


### F. Close Load Plate and Socket Lever

- 1 Close the load plate all the way as shown.



- 2 With your finger, push down on the load plate as shown.
- 3 Close the socket lever and ensure that the load plate tab engages under the socket lever when fully closed.

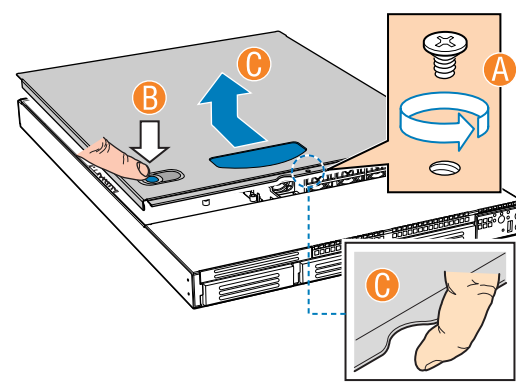


D23590-003

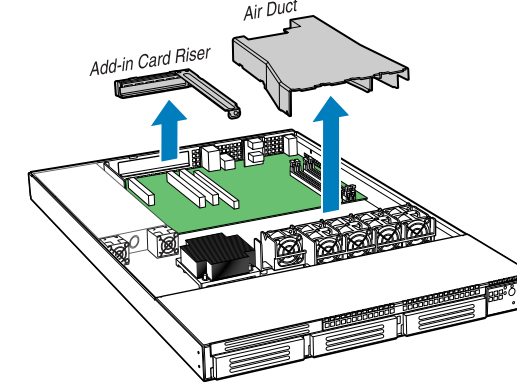


## 1 Remove the Top Cover

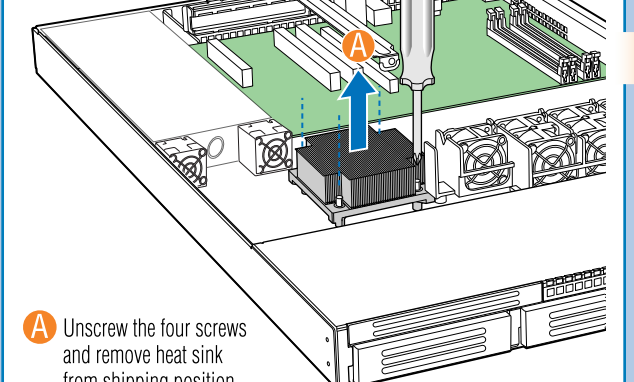
- Remove the shipping screw.
- Depress the latch.
- Slide the top cover toward the rear and lift upward.



## 2 Remove Processor Air Duct and Add-in Card Riser

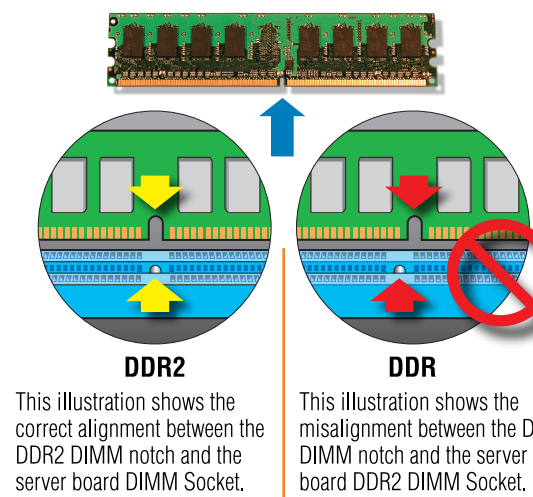


## 3 Remove Heat Sink From Shipping Position



## 4 DDR2 DIMM Memory Identification

This server board does not support DDR memory. You must install DDR2 DIMMs to avoid possible damage to server board DIMM sockets.



## 5 Install Memory DIMMs

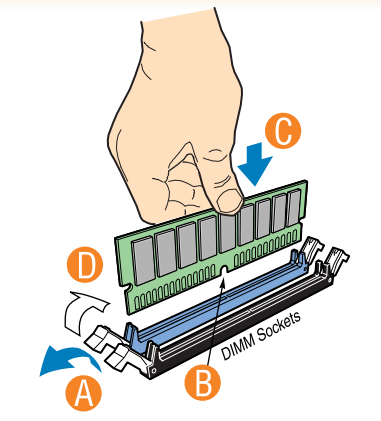
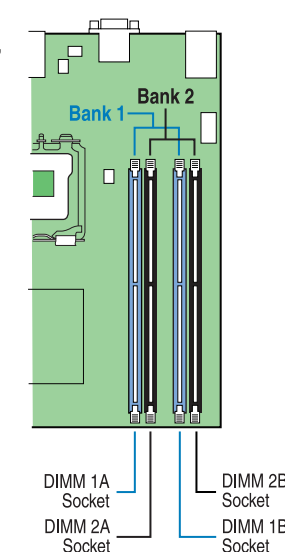
Memory Type: Minimum of one 256MB, DDR2 400/533/667 compliant unbuffered, ECC or non-ECC, SPD SDRAM 240-pin gold DIMM.

Notes and Cautions: Populate DIMMs in the order of: 1A, 1B, 2A and 2B

Avoid touching gold contacts when handling or installing DIMMs.

The DIMM size, speed and vendor must be the same within a bank. However, the DIMM size can vary between banks. For example, Bank 1 can use two 256 MB DIMMs and Bank 2 can use two 512 MB DIMMs.

Note: For additional memory configurations, see the User Guide on the CD that accompanied your Intel® Server Board SE7320NH1-E, or go to: <http://support.intel.com/support/motherboards/server/sr1475nh1-e>. Memory sizing and configuration is guaranteed only for qualified DIMMs approved by Intel®.



### To Install DIMMs:

- Open both DIMM socket levers.
- Note location of alignment notch.
- Insert DIMM making sure the connector edge of the DIMM aligns correctly with the slot.
- Push down firmly on the DIMM until it snaps into place and both levers close.

## 7 Install Heat Sink

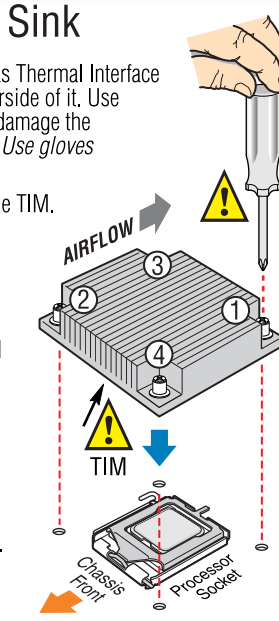
CAUTION: The heat sink has Thermal Interface Material (TIM) on the underside of it. Use caution so that you do not damage the thermal interface material. Use gloves to avoid sharp edges.

- Remove protective film on the TIM.
- Align heat sink fins to the front and back of the chassis for correct airflow.

Each heat sink has four captive fasteners and should be tightened using the following procedure:

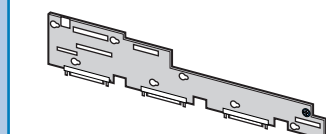
- Finger-tighten each fastener diagonally, according to the numbers shown.
- Securely re-tighten each fastener again in the same order as performed in step B.

CAUTION: Do not over-tighten fasteners.



## 8 Install SATA or SCSI Backplane (optional)

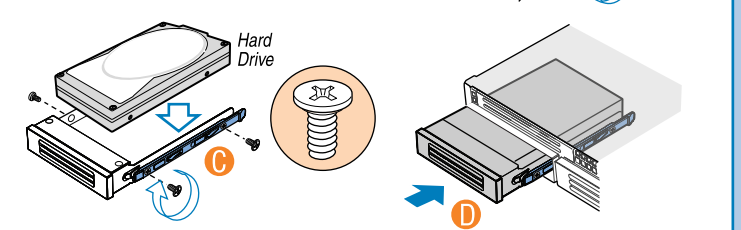
If you are not installing a backplane, go to Step 9. If you are installing an optional backplane, go to the backplane kit documentation for instructions on installing the backplane.



Complete the backplane installation instructions and then return to this document and go to Step 12.

## 9 Install Hard Drives

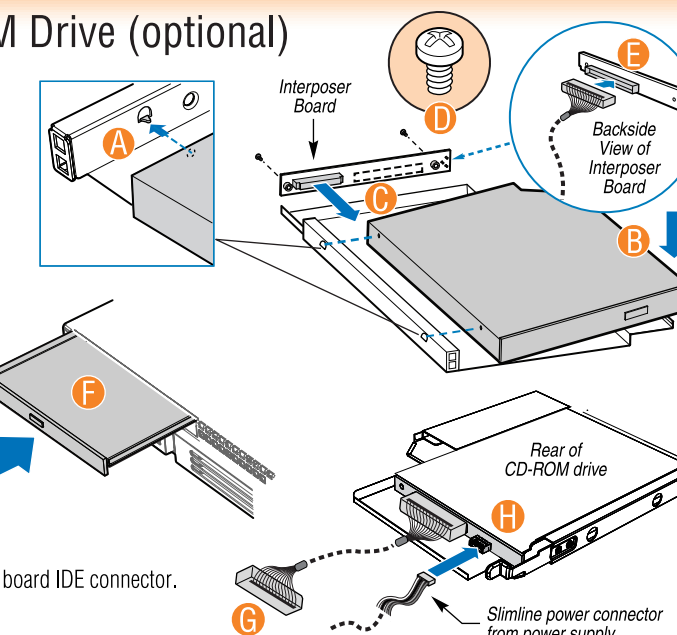
- Remove fixed drive carrier(s) by pushing blue carrier latch and pulling drive carrier out of the system.
- Remove the plastic air baffle by removing four screws.
- Install the hard disk drive and attach with four screws.
- Slide each carrier into a drive opening until the blue carrier latch clicks into place.



## 10 Install Slimline DVD/CD-ROM Drive (optional)

Note: If you plan to install a slimline floppy drive instead, see your user guide for instructions.

- Align the two holes on the left edge of the DVD/CD-ROM drive with the two cutouts in the tray. Note: If you have already installed the drive into the tray, skip to Step C below.
- Lower opposite side of DVD/CD-ROM drive into tray until it clicks into place.
- Align DVD/CD-ROM connector with connector on interposer board and install.
- Attach interposer board with two screws.
- Attach CD-ROM cable to interposer board. Note: CD-ROM cable ends are labeled.
- Install DVD/CD-ROM drive into slimline drive bay until it clicks into place. Note: Make sure the loose end of the CD-ROM cable goes through the drive opening prior to inserting the drive.
- Connect the opposite end of the CD-ROM cable to the server board IDE connector.
- Connect power to rear of CD-ROM.



## 11 Install Slimline Filler Panel (optional)

Note: This step is only necessary if you have NOT installed a slimline floppy or slimline DVD/CD-ROM drive.

Install the slimline filler panel as shown.

