

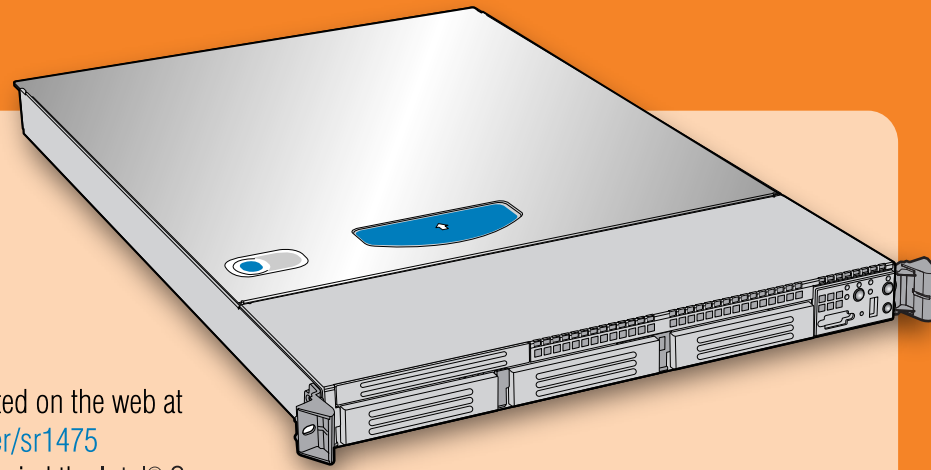


# Intel® Server Chassis SR1475 Quick Start User's Guide

Thank you for buying an Intel® Server Chassis. The following information will help you assemble your Intel® Server Chassis and install components.

This guide and other supporting documents are located on the web at <http://support.intel.com/support/motherboards/server/sr1475>. You can also find the guides on the CD that accompanied the Intel® Server Chassis SR1475.

If you are not familiar with ESD (Electrostatic Discharge) procedures used during system integration, complete ESD procedures as described in your User Guide. For more details on Intel® Server Chassis, please see: <http://www.intel.com/go/serverbuilder>



## Minimum Hardware Requirements

To avoid integration difficulties, make sure your system meets the minimum requirements below:

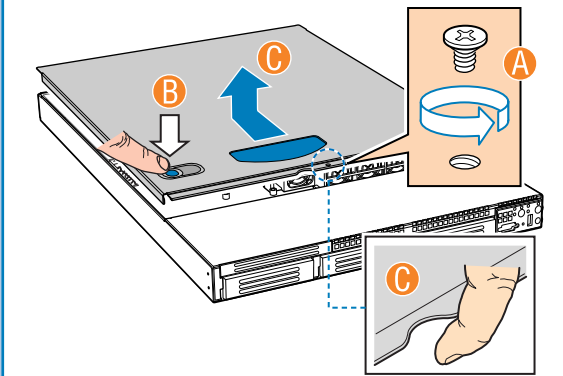
- Processor: One Intel® Pentium® D or one Intel® Pentium® 4 processor. Minimum 2.8 GHz.
- Memory: Minimum of one 256 MB, DDR2 400/533/667 compliant unbuffered, ECC or non-ECC, SPD SDRAM 240-pin gold DIMM.
- Riser (optional PCI-Express or PCI-X): Full Height Riser

## 1 Before you Begin

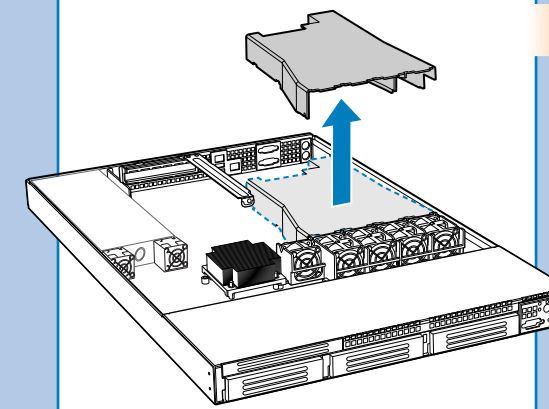
For purposes of clarity, this document shows the integration of the Intel® Server Board SE7230NH1-E. If you are installing a different server board, procedures should be similar, but connection locations may differ. Begin with this Quick Start User's Guide, then go to your server board quick start user's guide when directed.

## 2 Remove the Top Cover

- Remove the shipping screw.
- Depress the latch.
- Slide the top cover toward the rear and lift upward.

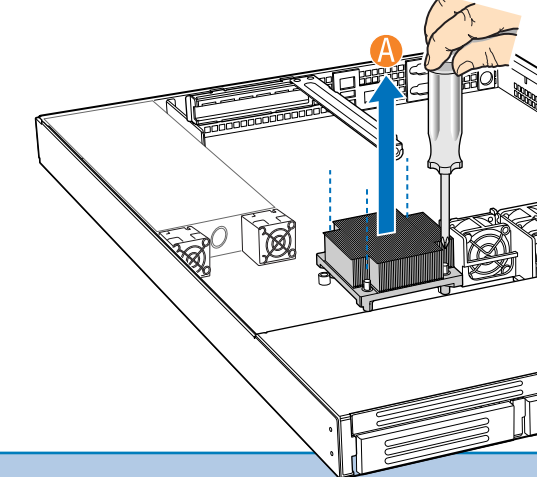


## 3 Remove the Processor Air Duct



## 4 Remove the Heat Sink

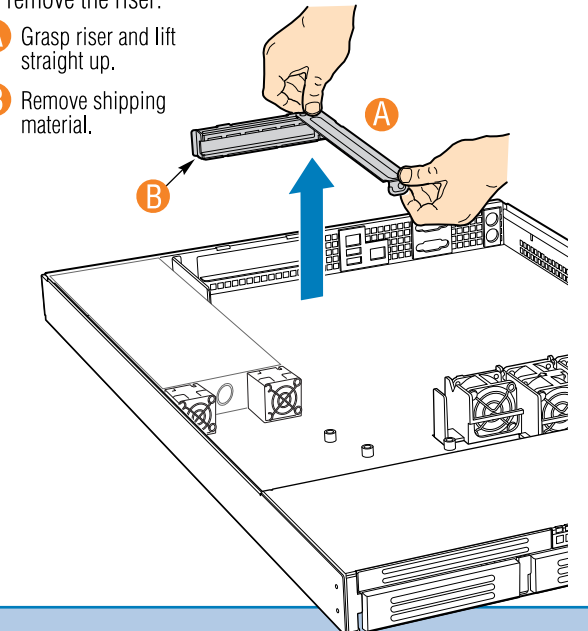
- Unscrew the four screws and remove the heat sink from its shipping position.



## 5 Remove Add-in Card Riser Assembly

To remove the riser:

- Grasp riser and lift straight up.
- Remove shipping material.



### Warning



Read all caution and safety statements in this document before performing any of the instructions. Also see the *Intel® Server Board and Server Chassis Safety Information* document at: <http://support.intel.com/support/motherboards/server/sb/cs-010770.htm> for complete safety information.

### Warning



Installation and service of this product to be performed only by qualified service personnel to avoid risk of injury from electrical shock or energy hazard.

### Caution

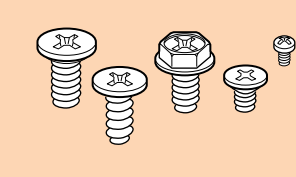


Observe normal ESD (Electrostatic Discharge) procedures during system integration to avoid possible damage to server board and/or other components.

### Tools Required



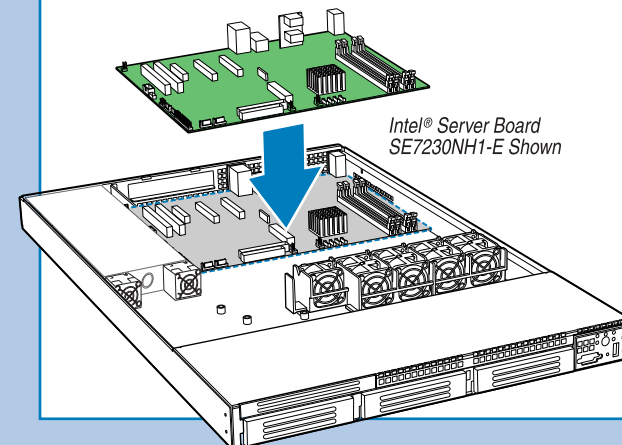
### Fastener Identification Guide



## 6 Install the Server Board

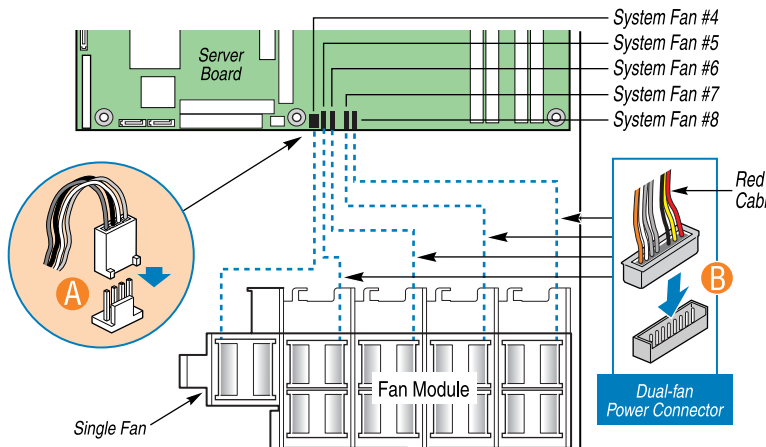
See your Intel® Server Board Quick Start User's Guide for server board installation instructions.

Open the Intel® Server Board box. Follow the instructions in the enclosed Intel® Server Board Quick Start User's Guide and return to this document when finished.

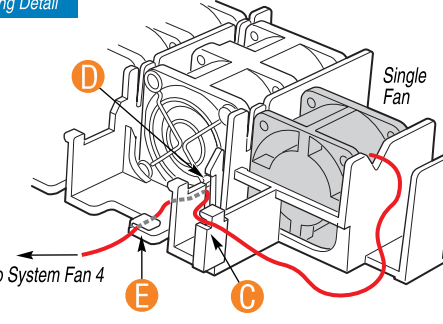


## 7 Make Fan Module Power Connections

- Connect single fan power cable to server board connector as shown.
- Connect four dual fan power cables to server board connectors as shown. Note: Red cable must face CPU.



### Single Fan Cable Routing Detail

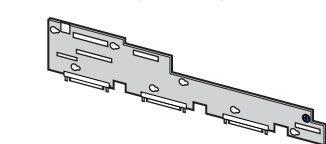


Route single fan power cable as shown:  
C ... through plastic notch.  
D ... around and through slot.  
E ... under plastic clip.

## 8 Install Backplane Kit (optional)

If you are NOT installing a backplane, go to Step 9.

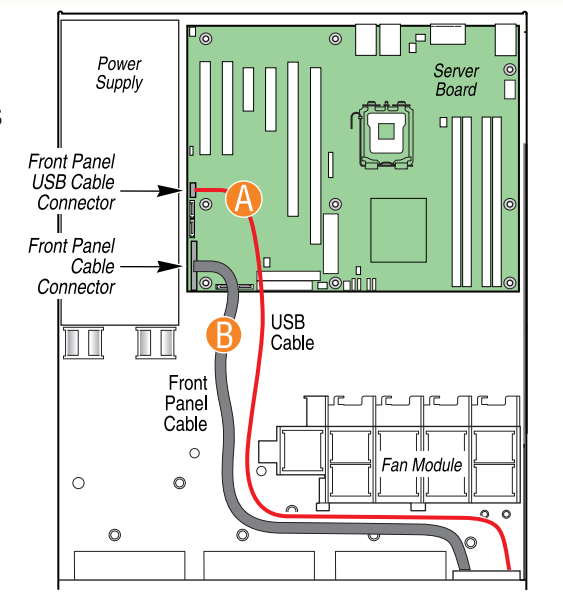
If you are installing an optional backplane, go to the backplane kit documentation for instructions on installing the backplane.



Complete the backplane installation instructions and then return to this document and go to Step 13.

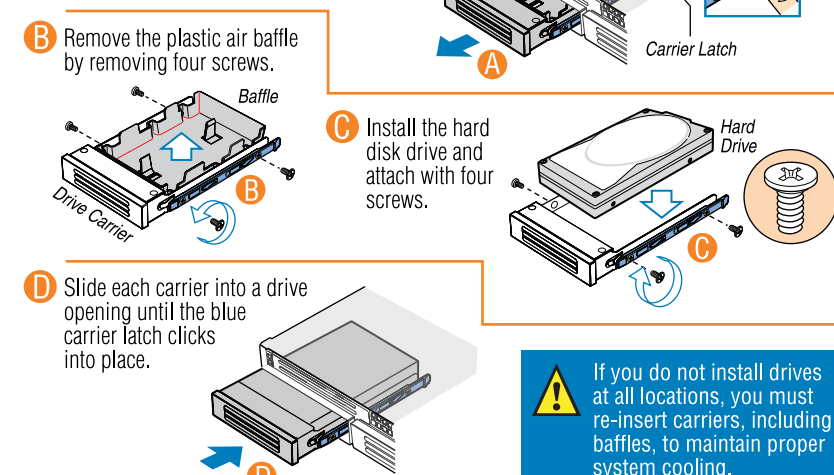
## 9 Make System Connections • Front Panel Cables

- Route front panel USB cable as shown and connect to server board.
- Route front panel cable as shown and connect to server board.



## 10 Install Hard Drives

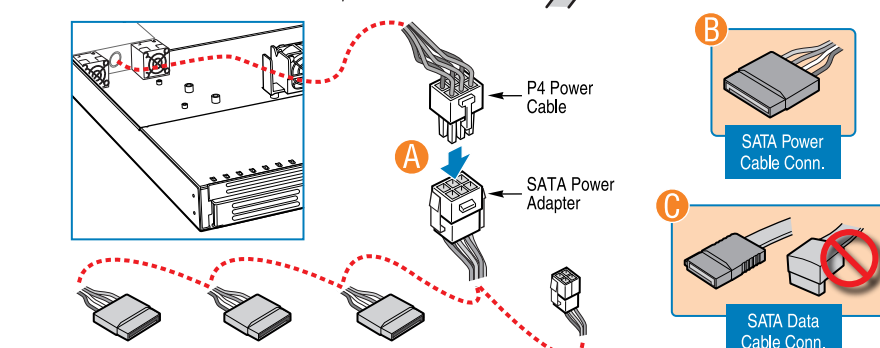
- Remove fixed drive carrier(s) by pushing the blue carrier latch and pulling the drive carrier out of the system.
- Remove the plastic air baffle by removing four screws.
- Install the hard disk drive and attach with four screws.
- Slide each carrier into a drive opening until the blue carrier latch clicks into place.



If you do not install drives at all locations, you must re-insert carriers, including baffles, to maintain proper system cooling.

## 11 Install SATA Power/Data Cable(s) to Hard Drives

- Connect the P4 power cable to the SATA power adapter.
- Connect SATA power cable(s) to rear of installed SATA drive(s).
- Connect SATA data cable(s) to rear of installed SATA drive(s). Note: Use the straight end as shown, the right-angle connector end will be used in Step 12.



## 12 Attach SATA Data Cables to Server Board

- If using the Intel® Server Board SE7230NH1-E, connect right angle SATA data cable end(s) to server board SATA 0 and SATA 1 connector(s).
- Connect straight SATA data cable end to server board SATA 2 connector.

