

Intel AppUpSM Small Business Service

Built on the Intel[®] Hybrid Cloud Platform

User Guide - Apani

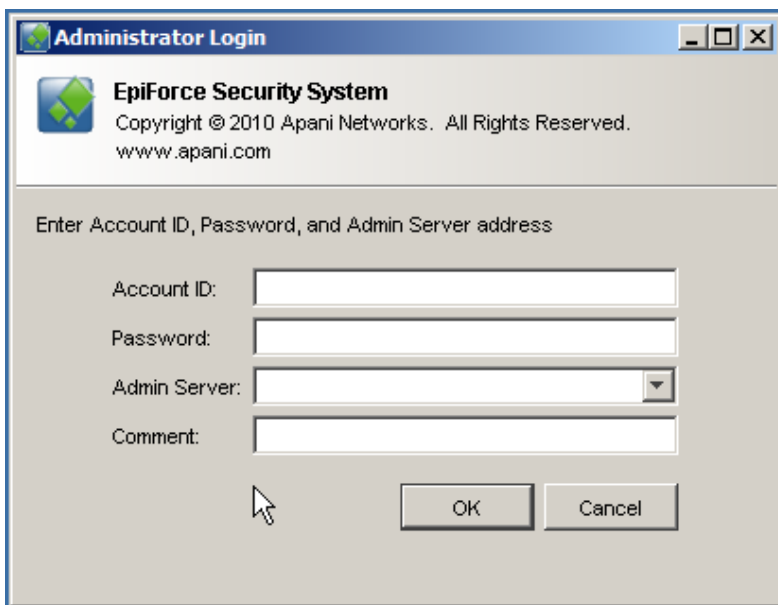
Note :

1. Apani EpiForce* application should not be installed on a VM which has multiple IP addresses.
2. Make sure the IP address of the VM does not change after installation of Apani EpiForce.

Apani EpiForce 3.7.0 is on the Intel AppUpSM Small Business Service catalog.

To launch the Admin console:

1. Start->All Programs->Apani->Apani EpiForce Admin Console



2. Enter Account ID & Password in appropriate fields. Click on 'OK'

Account ID: **admin**

Password: **'epiforce123'**

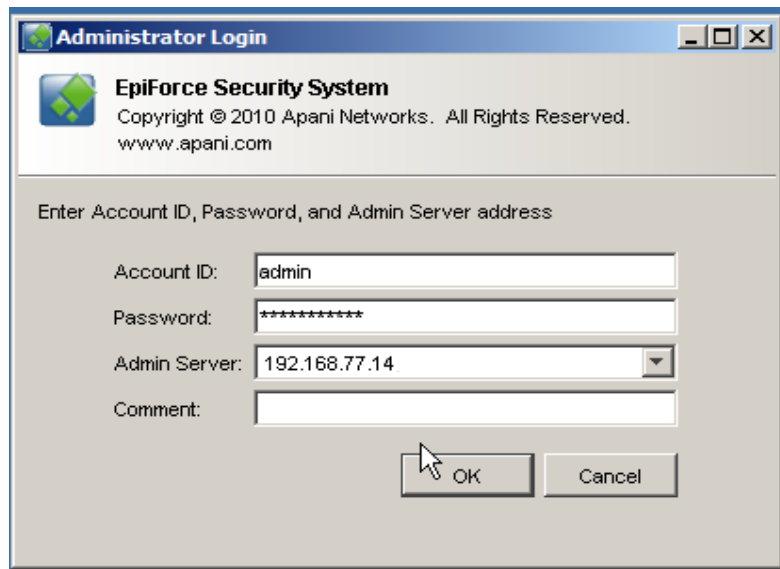
Copyright © 2011 Intel Corporation. All rights reserved. Intel and the Intel logo are trademarks of Intel Corporation in the U.S. and/or other countries.

*Other names and brands may be claimed as the property of others.

Admin Server will be the IP address of the Windows* appliance where it is installed.

3. Note IP Address and secure for future reference.

4. Click on 'OK' button.

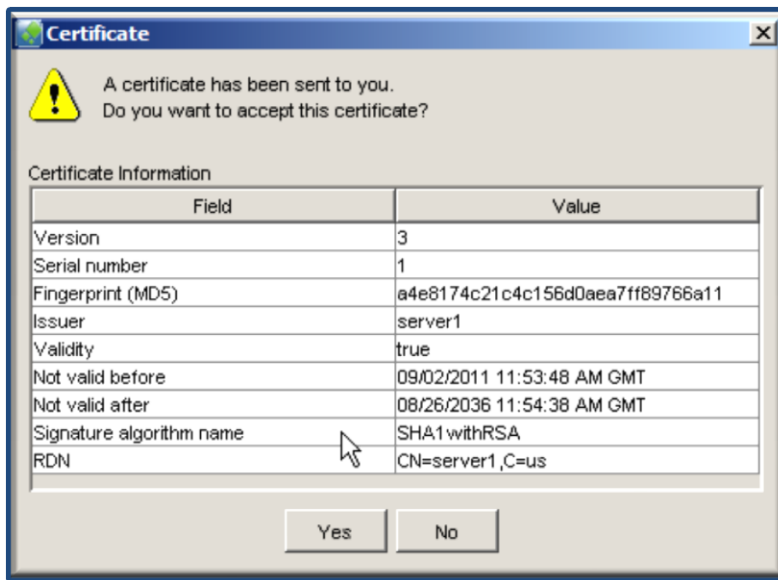


5. Enter Password 'epiforce123' in Certificate Request Password Screen



6. Click on 'OK' button.

7. Click 'Yes' button on Certificate Acceptance window



EpiForce Administration Console will now launch. It is now ready to use.

