

Intel AppUpSM Small Business Service

Built on the Intel[®] Hybrid Cloud Platform

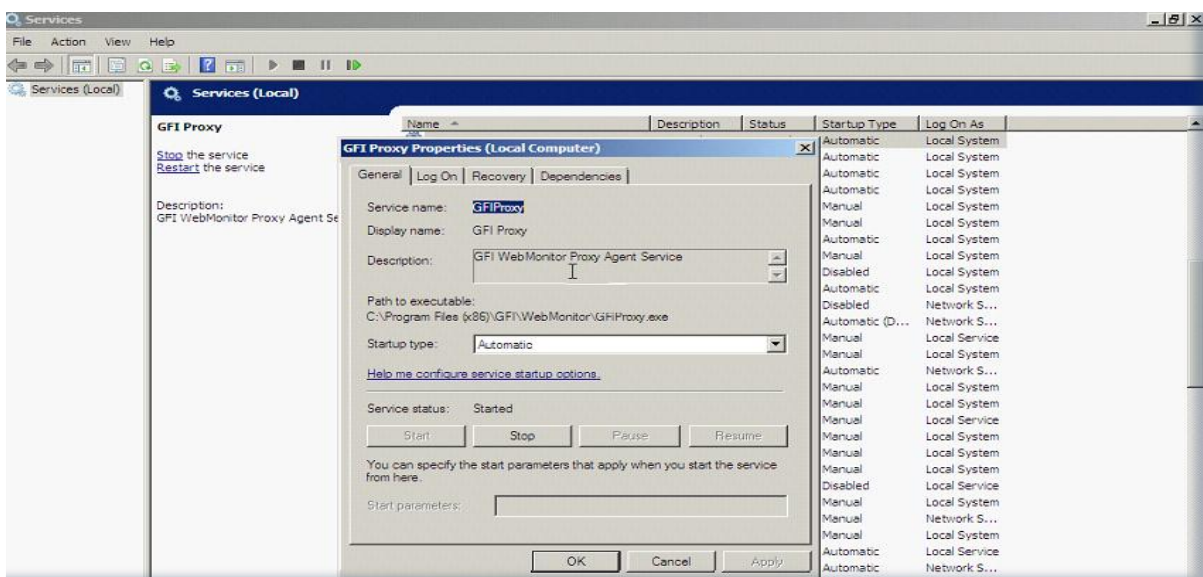
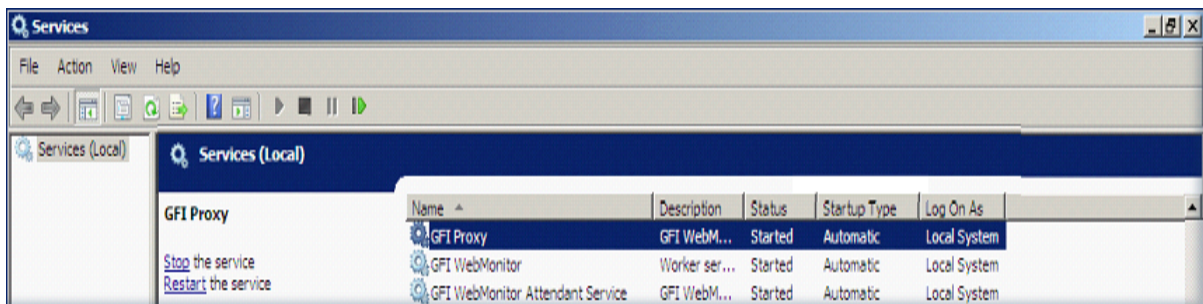
User Guide – GFI WebMonitor 2011

By default, GFI WebMonitor 2011 Application Installation occurs while its services run on the local system account. WebMonitor utilizes the following three services:

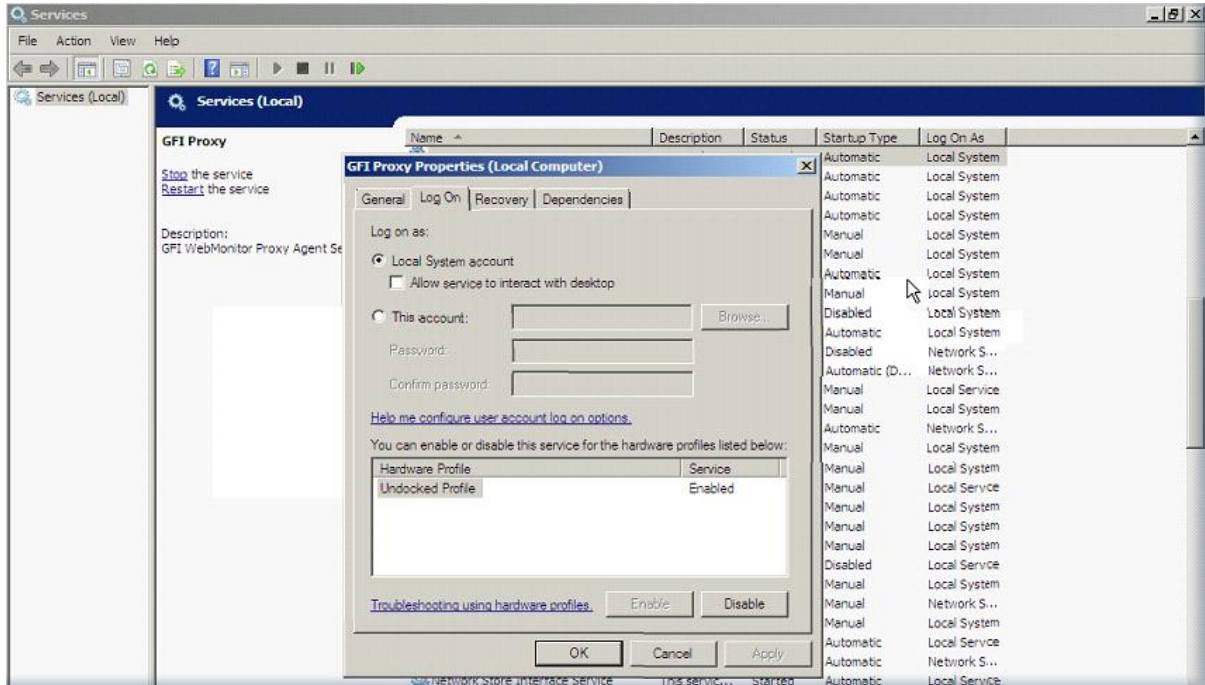
- GFI Proxy
- GFI WebMonitor
- GFI WebMonitor Attendant Service

It is advisable to run these services as Administrator. Instructions for initializing the three services are here:

1. Go to services.msc (Start → Run → services.msc). All three services will be listed.
2. Right click on 'GFI Proxy' service to launch Properties.



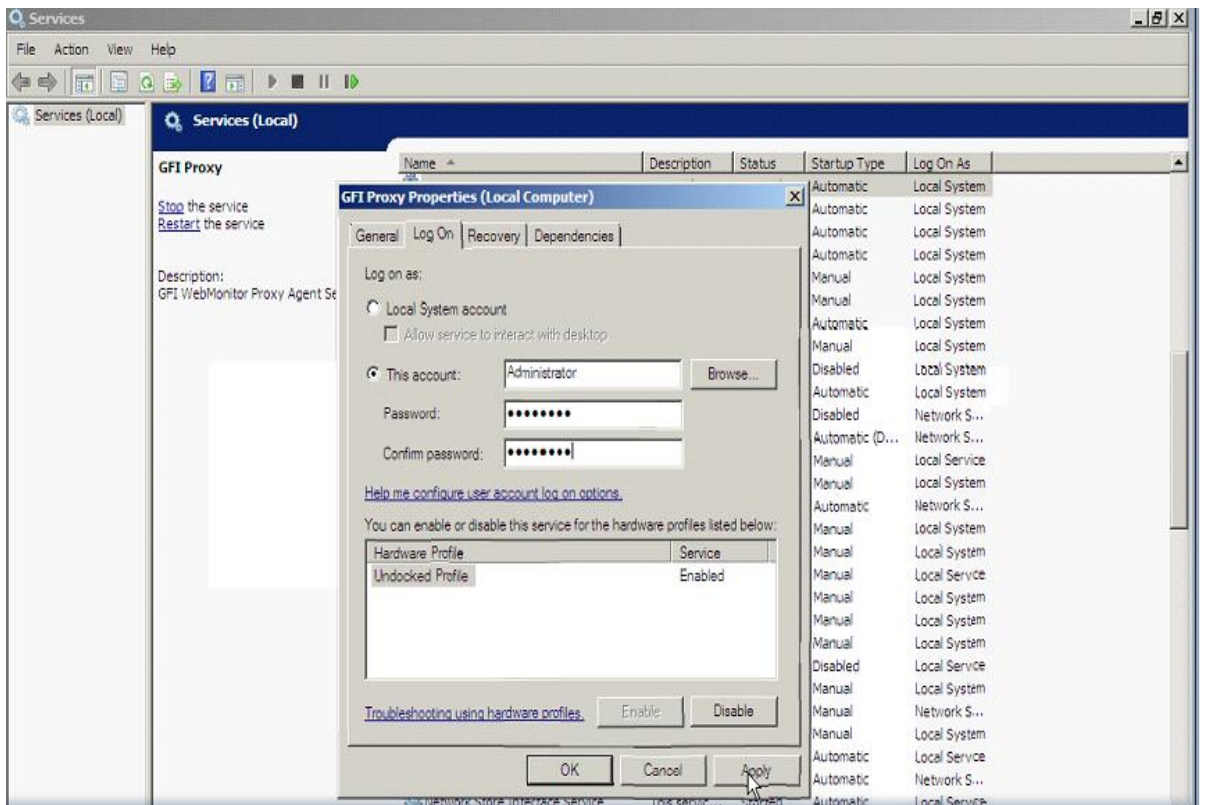
3. Click on 'Log On' tab

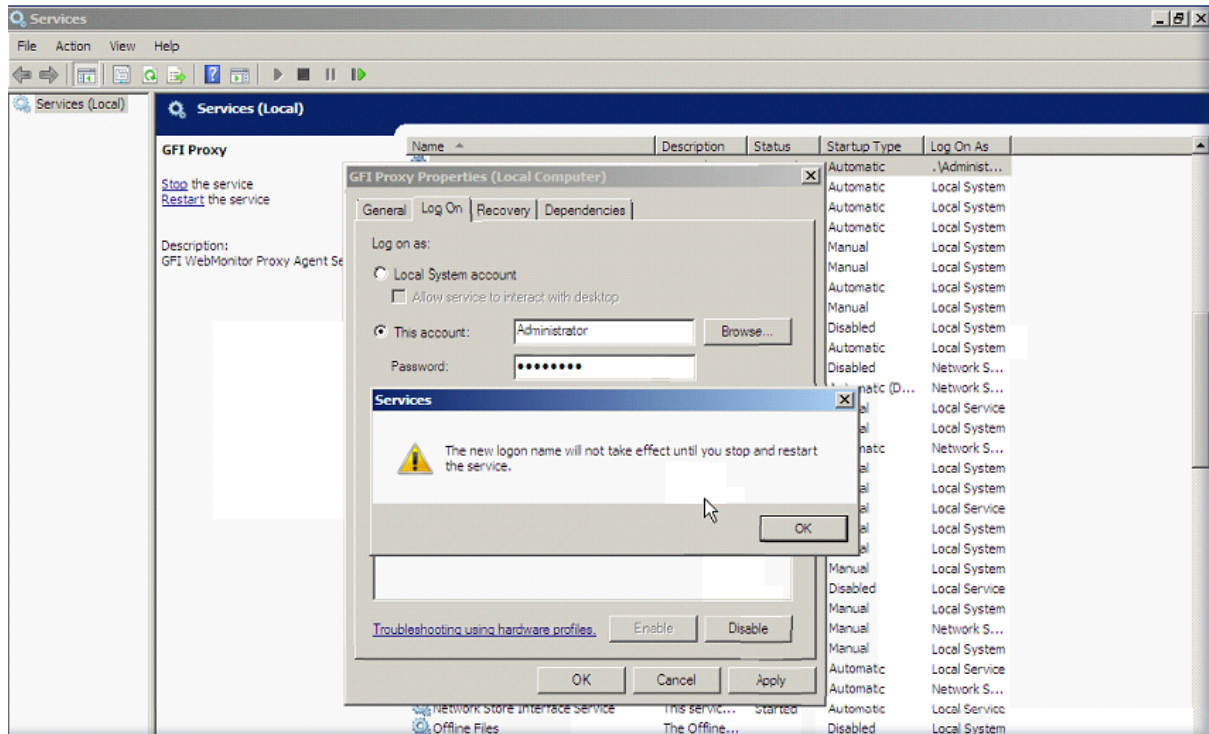


4. Click on 'This account'

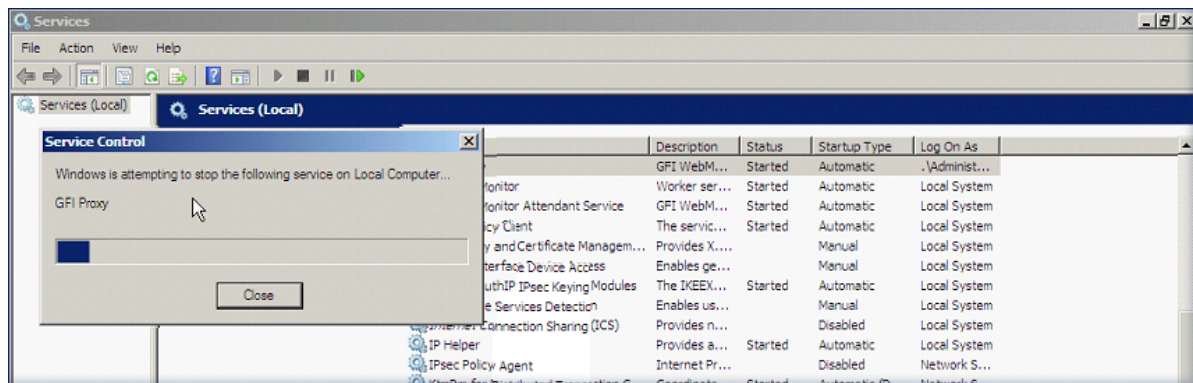
5. Add Account Name: Administrator

6. Add password, Click on 'Apply' button





7. Restart GFI Proxy service.



Follow above steps to activate remaining two services: GFI WebMonitor & GFI WebMonitor Attendant Service.