

# Intel AppUp<sup>SM</sup> Small Business Service

Built on the Intel<sup>®</sup> Hybrid Cloud Platform

## Migration Guide -Windows<sup>®</sup> Small Business Server 2011

### Instructions for Migrating to Windows\* Small Business Server 2011 on the Intel<sup>®</sup> Hybrid Cloud Server System Build 3.0

This document provides information on how to migrate the Microsoft<sup>®</sup> Windows\* Small Business Server (SBS) 2008 appliance to the Microsoft\* Windows\* Small Business Server (SBS) 2011 appliance on the Intel Hybrid Cloud server system, build 3.0.

This document also describes how to activate ActivAeon\* agents on the Microsoft\* Windows\* SBS 2011 appliance after you finish the migration.

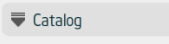
1. **Create Answer File** (Refer to <http://technet.microsoft.com/en-us/library/gg490796.aspx> as a guide.)

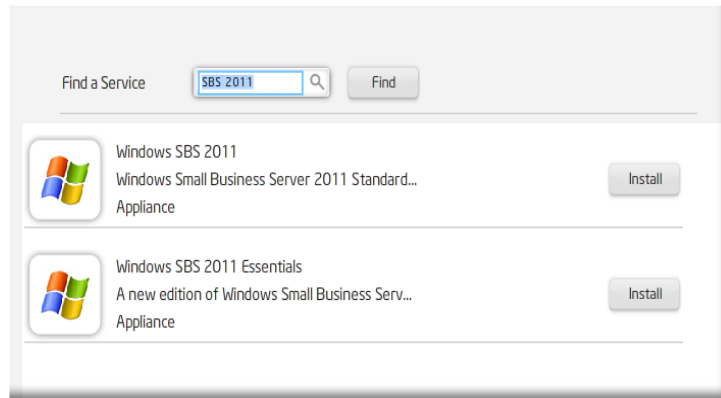
2. **Upload SBSAnswerFile and Hybrid Cloud Migration Files to SBS 2011**

**Prerequisite:**

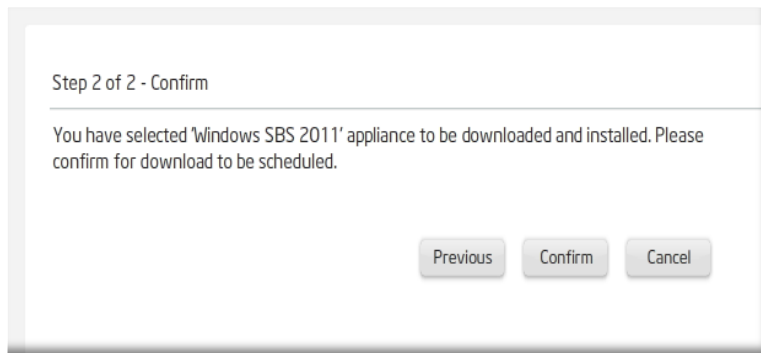
- Intel Hybrid Cloud Server Manager is installed in management computer, available at: [http://downloadcenter.intel.com/Detail\\_Desc.aspx?agr=Y&DwnldID=20533](http://downloadcenter.intel.com/Detail_Desc.aspx?agr=Y&DwnldID=20533)
- Completed Answer File

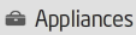
3. **Download the Microsoft\* SBS 2011 appliance from Intel Hybrid Cloud web portal**

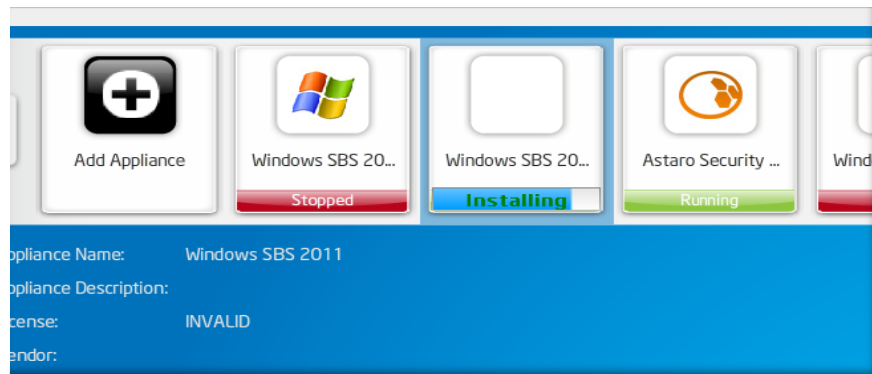
- a) Choose **Start > All Programs > HybridCloudServerManager**
- b) Select the **Connect** tab.
- c) Log into Hybrid Cloud Server Manager.
- d) Click the **Catalog**  button. The web portal credentials login window opens up.
- e) Enter the username and password used to register the Intel Hybrid Cloud server, click **Sign In**. The Catalog page opens up.
- f) Enter SBS 2011 into **Find a Service** text box and click the **Find** button. Windows\* SBS 2011 is returned.



- g) Click the Install button to the right of Microsoft\* Windows\* SBS 2011. The Confirm page opens.
- h) Click the Confirm button. The first page of the Catalog page is displayed again.



- i) Click the Appliance  button on the left hand side of the Intel Hybrid Cloud server manager. The Appliance page will open and Windows\* SBS 2011 will have a status of 'Installing'.



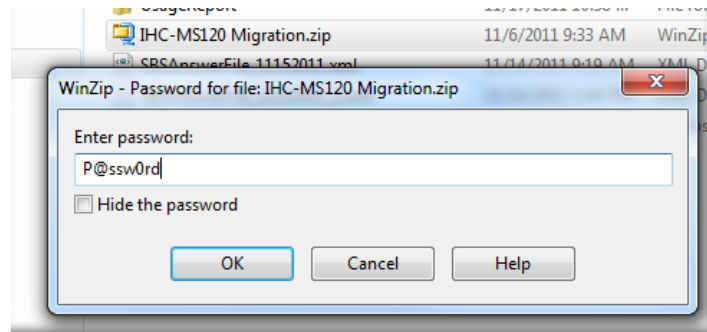
*Note: It may take a few minutes for the status to update. Total installation time for the Microsoft\* SBS 2011 appliance may be up to 30 minutes.*

- j) Microsoft\* SBS 2011 installation is complete once status reads '**Stopped**'.

4. From the Management PC, download the Hybrid Cloud SBS 2011 migration files. Located at Intel's download center:

[http://downloadcenter.intel.com/Detail\\_Desc.aspx?agr=Y&DwnldID=20668](http://downloadcenter.intel.com/Detail_Desc.aspx?agr=Y&DwnldID=20668)

- a) Unzip the **IHC-MS120 Migration.zip** file to a folder or directory.



- b) Click on the **IHC-MS120 Migration** folder unzipped in the previous step. The following files should display:

ihc\_IHC\_MS120.rb  
IHC\_MS120\_configure.bat  
IHC\_MS120\_copy.bat  
IHC\_MS120\_install.bat  
IHC\_MS120\_installVMLC.bat  
IHC\_MS120\_template.xml  
LM\_copy\_migration.pl  
schema.yaml

- c) Copy the **SBSAnswerFile.xml** into the **IHC-MS120 Migration** folder.

- d) Rename the **SBSAnswerFile.xml** to **IHC\_MS120\_SBS\_template.xml**.

Name	Date modified	Type
ihc_IHC_MS120.rb	10/12/2011 12:14 ...	RB File
IHC_MS120_configure.bat	10/25/2011 5:25 AM	Windows Batch File
IHC_MS120_copy.bat	10/24/2011 10:10 ...	Windows Batch File
IHC_MS120_install.bat	10/24/2011 10:04 ...	Windows Batch File
IHC_MS120_installVMLC.bat	10/24/2011 10:02 ...	Windows Batch File
IHC_MS120_SBS_template.xml	11/1/2011 2:52 PM	XML Document
IHC_MS120_template.xml	10/24/2011 10:11 ...	XML Document
LM_copy_migration.pl	10/27/2011 12:41 ...	PL File
schema.yaml	10/24/2011 10:17 ...	YAML File
upload.bat	10/26/2011 11:20 ...	Windows Batch File

**5. Upload Hybrid Cloud SBS 2011 migration files to the Microsoft\* SBS 2011 appliance on the Intel Hybrid Cloud server.**

- a) From the Management PC, load Microsoft\* Windows\*, choose **Start** .
- b) Type **cmd** into the *Search program files* text box and hit the Enter key. The command line window will open.
- c) **cd** to the **IHC-MS120 Migration** directory. Enter and execute the following command:

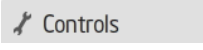
**upload.bat <Intel Hybrid Cloud server ip> <username> <password>**

```
C:\>cd "IHC-MS120 Migration"  
C:\IHC-MS120 Migration>upload.bat 123.123.123.123 user1 password
```

The following files will be uploaded:

- ihc\_IHC\_MS120.rb
- IHC\_MS120\_configure.bat
- IHC\_MS120\_copy.bat
- IHC\_MS120\_install.bat
- IHC\_MS120\_installVMLC.bat
- IHC\_MS120\_SBS\_template.xml
- IHC\_MS120\_template.xml
- LM\_copy\_migration.pl
- schema.yaml

**6. Copy the migration scripts to SBS 2011**

- a) *If Hybrid Cloud Server Manager is not open*, choose **Start > All Programs > HybridCloudServerManager**
- b) Select the Connect tab.
- c) Log into Hybrid Cloud Server Manager.
- d) Click on the Controls  button.
- e) Select the Scripts tab. The Scripts page opens.
- f) Enter the number next to Copy migration scripts to SBS 2011 and hit the Enter key.
- g) Hit any key when the Press any key to continue message is displayed. The copy of the migration scripts to SBS 2011 is now complete.



**[SBS 2011 Migration](#)**

**Prerequisite:**


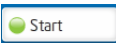
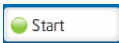
- Intel Hybrid Cloud server manager is installed in management computer.

- Completed the Upload SBSAnswerFile and Hybrid Cloud Migration Files to SBS 2011 steps.
- Microsoft\* SBS 2008 administrator username and password.
- Microsoft\* SBS 2008 appliance needs to be started / connected to the same network as Microsoft\* SBS 2011.

## 1. Activate Microsoft\* SBS 2011

- In the management computer, open up a web browser and go to <https://hybridcloud.intel.com>.
- Log into the web portal using the username and password used to registered the Intel Hybrid Cloud server
- Select the **Tasks**  button.
- Find your server name. Click the **Activate**  button next to the SBS 2011 appliance. SBS 2011 is now activated.
- Click the **Sign Out** button.

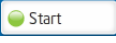
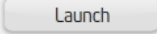

## 2. Start SBS 2011 in migration mode and perform post migration validation - Use the post migration sections at <http://technet.microsoft.com/en-us/library/gg490796.aspx> as a supplemental guide.

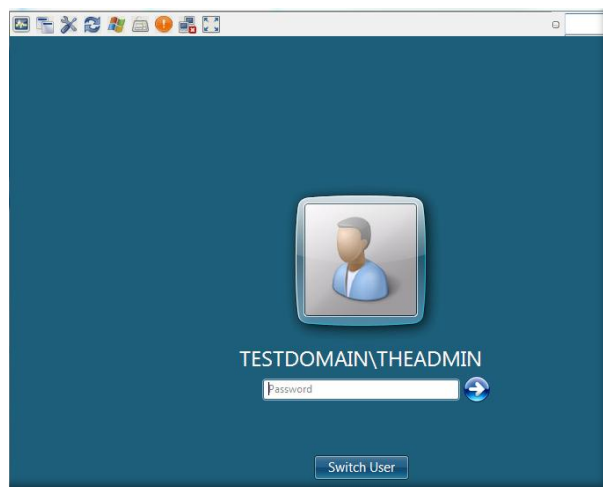
- If Hybrid Cloud Server Manager is not open, choose **Start > All Programs > Hybrid Cloud Server Manager**
- Select the **Connect** tab
- Log into Hybrid Cloud Server Manager.
- Select **Appliances**  button, the Appliances page opens.
- Select the Microsoft\* SBS 2008 appliance. (**Skip this step if Microsoft\* SBS 2008 is not installed in the Intel Hybrid Cloud server**)
- If the Microsoft\* SBS 2008 status is *Stopped*, click on the **Start**  button. The Microsoft\* SBS 2008 status changes to *Starting*, then *Running*. (**Skip this step if Microsoft\* SBS 2008 is not installed in the Intel Hybrid Cloud server**)
- Select Microsoft\* SBS 2011 appliance.
- Click the **Start**  button. The **Appliance Auto Configuration Information** window pops up.
- Fill out the required fields, click **Apply**. The migration process starts and may take up to 30 minutes to complete.

**Appliance Auto Configuration Information**

First Name (*)	<input type="text"/>	Last Name (*)	<input type="text"/>
Address	<input type="text"/>	Address 1	<input type="text"/>
Zip Code	<input type="text"/>	City	<input type="text"/>
State	<input type="text"/>	Country	<input type="text"/>
Server Name (*)	<input type="text"/>	Business Name (*)	<input type="text"/>
Network Administrator (*)	<input type="text"/>	Internal Domain Name (*)	<input type="text"/>
Password (*)	<input type="text"/>	Re-enter Password (*)	<input type="text"/>

Mandatory Apply

- j) When the migration completes, click on the Microsoft\* SBS 2011 appliance.
- k) If the Microsoft\* SBS 2011 status is Stopped, click on the **Start**  button. The Microsoft\* SBS 2011 status changes to Starting and then Running.
- l) Select the **Console** tab. The **Console** page opens.
- m) Click the Launch  button next to VNC Console. The Microsoft\* SBS 2011 VNC opens up.
- n) Click the Send Ctl+Alt+Del to host  button in the SBS 2011 VNC. Log into the Microsoft\* SBS 2011 appliance using the administrator credentials.
- o) Choose **Start** and enter `cmd` into **Search programs and files** text box. The command line window opens.



- p) Type `ipconfig` into the command line. The IPv4 address and gateway should match the Destination Server IP address and Default gateway entered into the **SBSAnswerFile**.

```

C:\Users\THEADMIN>ipconfig


Windows IP Configuration

Ethernet adapter Local Area Connection:

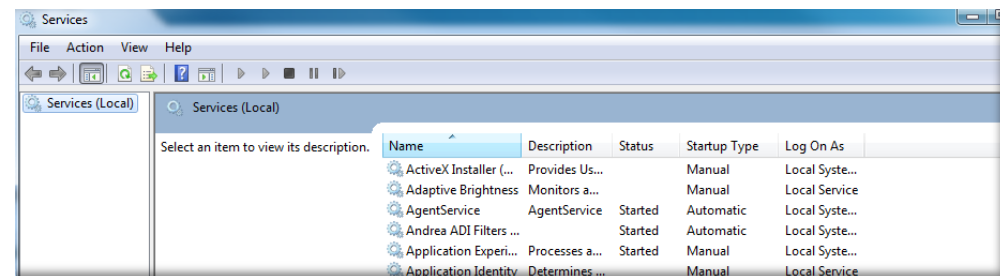
    Connection-specific DNS Suffix  . : 
    Link-local IPv6 Address . . . . . : fe80::73da:fb4:427d:9946%10
    Link-local IPv6 Address . . . . . : fe80::91f5:5d86:12b5:b5d4%10
    IPv4 Address. . . . . : 192.168.77.3
    Subnet Mask . . . . . : 255.255.255.0
    Default Gateway . . . . . : 192.168.77.2

```

q) Close **Start**, right click on **Computer** and select **Properties**. The domain and computer name should match the SBS 2008 domain name and Destination Server name entered into the **SBSAnswerFile** respectively.

r) Select **SBS Consoles**  icon from the desktop. The SBS Console opens. Click on **Users and Groups**. The user names and number of users should match those in SBS 2008.

s) Click Start and enter `services.msc` into Search programs and files text box. The Services window opens. **ActivAeon** agents should not be displayed. The post migration validation is now complete.




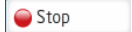
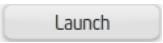
## ActivAeon Configuration for SBS 2011 Post Migration

### **Prerequisite:**

- Intel Hybrid Cloud Server Manager is installed in management computer
- Completed the Upload SBSAnswerFile and Hybrid Cloud Migration Files to SBS 2011 step
- Completed the SBS 2011 Migration steps
- Microsoft\* SBS 2008 administrator username and password

### **1. Start ActivAeon Agents in Microsoft\* SBS 2011**

- If Hybrid Cloud Server Manager is not open, choose **Start > All Programs > HybridCloudServerManager**
- Select the **Connect** tab
- Log into Hybrid Cloud Server Manager. The Hybrid Cloud Server Manager opens.
- Select the **Appliances**  button.

- d) Select the Microsoft\* SBS 2008 appliance (**Skip this step if Microsoft\* SBS 2008 is not installed in Intel Hybrid Cloud server**)
- e) If the Microsoft\* SBS 2008 appliance has a Running status, click the **Stop**  button. Microsoft\* SBS 2008 status changes to Stopping and then Stopped. (**Skip this step if Microsoft\* SBS 2008 is not installed in Intel Hybrid Cloud server**)
- f) Select the Microsoft\* SBS 2011 appliance.
- g) If the Microsoft\* SBS 2011 appliance has a Stopped status, click the **Start** button to run the appliance. When the status changes to Running, click on the **Console** tab.
- h) Click the Launch  button next to VNC Console.
- i) Log into the Microsoft\* SBS 2011 appliance through the VNC
- j) After logging in, choose **Start** enter `cmd` into *Search programs and files* text box and hit Enter key.
- k) **cd** to the **ActivAeon XA** directory. Enter and execute the following command:

**xaConfigure.exe /manage**

```
C:\>cd "Program Files (x86)"
C:\Program Files (x86)>cd activAeon
C:\Program Files (x86)\activAeon>cd "activAeon XA"
C:\Program Files (x86)\activAeon\activAeon XA>xaConfigure.exe /manage
```

- l) Choose **Start** and enter `services.msc` into *Search programs and files* text box and hit the Enter key. The Services window opens. All **ActivAeon** agents should have Status = **Started**. ActivAeon agents have been activated.

