

Intel® PRO/Wireless 2200BG Network Connection



Product Description:

An embedded 802.11b/g MiniPCI type 3B adapter operating in the 2.4 GHz spectrum. This solution is based on the MiniPCI Type 3B form factor designed to meet the space and size requirements for thin and light notebook PCs.

Key Features:



- IEEE 802.11b/g standard dual-mode Wi-Fi CERTIFIED* Wireless LAN support (2.4GHz)[†]
- Up to 54 Mbps at 2.4 GHz (Note: 802.11b up to 11Mbps and 802.11g up to 54 Mbps throughput)
- Industry standard wireless LAN security support is available (802.1X, WEP, WPA[§]) and upgradeable support for AES with enabling software implementation[‡]
- Cisco* Compatible Extensions (such as LEAP and CKIP) support available on certain models. Check with your PC manufacturer for Cisco security support.[§]
- Support for antenna diversity enables optimized WLAN performance for multi-antenna systems.
- Intel® Wireless Coexistence System capability enables Bluetooth* co-existence
- Support for Wireless Multimedia Extensions (WME)[^]

Intel in
Communications

Technical Specifications

Model Name	Intel® PRO/Wireless 2200BG Network Connection (WM3B2200BG)
Dimensions (H x W x D)	1.75 in x 2.35 in x 0.19 in (44.60 mm x 59.75 mm x 4.9 mm)
Weight	12g
Antenna Interface Connector	Hirose* U.FL-R-SMT mates with cable connector U.FL-LP-066
Dual Diversity Antenna	On-board dual diversity switching support for systems designed with two antennas
Radio ON/OFF control[°]	Supported by both hardware and software
Connector Interface	MiniPCI Type III edge connector
LEDs output	Link, Activity
Operating Temperature	0 to +80° Celsius
Humidity Non-Operating	50 to 92% RH non-condensing (at temperatures of 25°C to 80°C)

Intel PRO
Network Connections

Technical Specifications continued

Operating System	Microsoft* Windows XP (Professional, Home, Tablet), 2000
Wi-Fi Alliance	Wi-Fi CERTIFIED* for 2.4 GHz band and WPA [§]
WHQL	YES
MiniPCI Compliant	YES

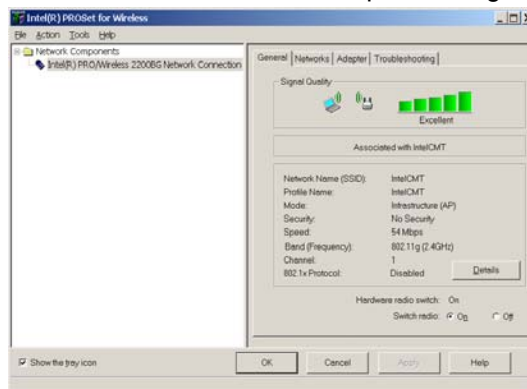
WLAN Standard	IEEE 802.11g and IEEE 802.11b
Architecture	Infrastructure or ad hoc (peer-to-peer)
Roaming¹	802.11g and 802.11b compliant for roaming between respective access points (802.11b, 802.11g, 802.11b/g)
Security[§]	
AUTHENTICATION	LEAP [§] , WPA [§] , 802.1X, EAP-TLS,
ENCRYPTION	CKIP, TKIP, 128-bit and 64-bit WEP
Product Safety	UL, C-UL, CB (IEC 60590)
Compliance	

Products Available	Product Code
Intel® PRO/Wireless 2200 BG Network Connection (MOW, Ch 1-11)	WM3B2200BG MW2
Intel® PRO/Wireless 2200BG Network Connection (ROW Ch 1-14)	WM3B2200BG RW3

Intel® PROSet for Wireless Software[◇]

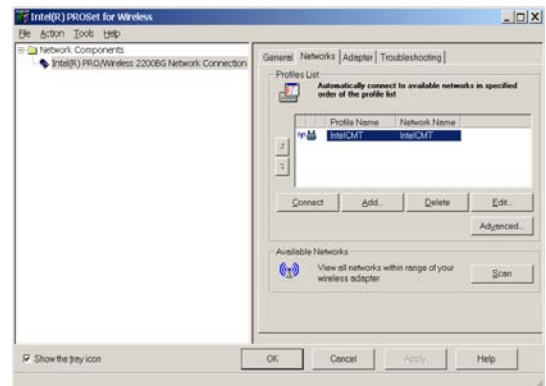
As part of Intel® PRO Network Connection Software, Intel® PROSet for Wireless software provides driver consistency. Intel PROSet for Wireless software helps enable a superior mobile experience by providing:

- Connection Status
- Network/Wireless Adapter Management



Connection Status

- Signal Strength
- Network Name
- Security
- Radio On/Off



Network/Wireless Adapter Management

- Network Management
 - Network Name
 - Security Settings
 - Network Discovery
 - Multiple profile setup
- Wireless Adapter Management
 - Power Settings

* Other names and brands may be claimed as property of others.

+Wireless connectivity and some features may require you to purchase additional software, services or external hardware. Availability of public wireless LAN access points limited and some hotspots may not support Linux-based Intel Centrino mobile technology systems. System performance measured by MobileMark® 2002. System performance, battery life, wireless performance and functionality will vary depending on your specific operating system, hardware and software configurations. See http://www.intel.com/products/centrino/more_info for more information.

[§] Some security solutions may not be supported by your PC's operating system and/or by your PC manufacturer. Check with your PC manufacturer for details on availability.

[◇] Intel® PROSet for Wireless software may not be supported by your PC manufacturer. Check with your PC manufacturer for details on availability.

[‡] AES requires PC software upgrade that will be available in 2H'04 and requires access point support. Available on 802.11 b/g only. Check with your PC manufacturer for availability.

[^] WME support requires a WME enabled access point and requires a PC software upgrade that will be available in 2H'04. Available on 802.11 b/g only. Check with your PC manufacturer for details on availability.

¹Roaming is supported only between each respective band and mode of access points.

Information in this document is provided in connection with Intel products. No license, express or implied, by estoppel or otherwise, to any intellectual property rights is granted by this document. Except as provided in Intel's Terms and Conditions of Sale for such products, Intel assumes no liability whatsoever, and Intel disclaims any express or implied warranty, relating to sale and/or use of Intel products including liability or warranties relating to fitness for a particular purpose, merchantability, or infringement of any patent, copyright or other intellectual property right. Intel products are not intended for use in medical, life saving, or life sustaining applications. Intel may make changes to specifications and product descriptions at any time, without notice. For the most current product information, please visit: <http://www.intel.com/network>

Intel and the Intel logo are trademarks or registered trademarks of the Intel Corporation or its subsidiaries in the United States and other countries.

Copyright © Intel Corporation, 2004. All rights reserved.