

Intel® PRO/WIRELESS 5000 LAN PRODUCT FAMILY SPECIFICATIONS

| | | |
|--------------------------|-----------------------|---|
| RANGE AND THROUGHPUT | Data Rates | • 54, 48, 36, 24, 18, 12, 9, 6 Mbps |
| | Typical Indoor Range | • 40 ft (12 m) @ 54 Mbps • 300 ft (91 m) @ 6 Mbps |
| | Typical Outdoor Range | • 100 ft (30 m) @ 54 Mbps • 1000 ft (305 m) @ 6 Mbps |
| FREQUENCY AND MODULATION | Frequency band | 5.15 GHz to 5.35 GHz |
| | Modulation | BPSK, QPSK, 16 QAM, 64 QAM |
| | Wireless Medium | Orthogonal Frequency Division Multiplexing (OFDM) 5 GHz UNII |
| | Channels | 8 non-overlapping* |
| POWER | Output Power | 40 mW to 90 mW dependent on frequency channel |
| COMPATIBILITY | OS | Windows® 98SE, Me, 2000, XP |
| | Web Browser | IE 5.50 or higher Netscape Version 4.78 or 5.x |
| | WECA | Pending ratification of inter operability test and logo program by WECA |
| SECURITY | Encryption | 0-bit, 64-bit and 128-bit WEP, 802.1x |
| QOS | DCF | CSMA/CA |
| REGULATORY AND SAFETY** | Safety | UL, C-UL, CE |
| | United States | FCC |
| | Canada | Industry Canada |
| | Japan | VCCI, JATE, Telec |
| SUPPORT | Support | Web: www.intel.com Phone: (800) 538-3373 |

Intel® PRO/WIRELESS 5000 LAN PRODUCT SPECIFICATIONS

| | | |
|-----------------------------|----------------------------|---|
| CARDBUS ADAPTER | Form Factor | CardBus Adapter |
| | Dimensions | 2.12 in x 4.4 in x .2 in-.3 in on extended portion (54mm x 114mm x 5mm-7.8mm on extended portion) |
| | Weight | 1.5 oz (43 g) |
| | LEDs | Link, Activity |
| | Operating Temperature | 0 to +55 Celsius |
| | Humidity | 10 to 90% non-condensing |
| | Transmit Power | 450 mA Typical 480 mA Max |
| | Receive Power | 420 mA Typical 440 mA Max |
| | Sleep | 30 mA |
| | Voltage | 3.3 V |
| | WLAN Standard | IEEE 802.11a |
| | WHQL | Yes |
| | Architecture | Infrastructure, Ad hoc (peer-to-peer) |
| | Roaming | 802.11a compliant for seamless roaming between access points |
| Wired-to-wireless switching | Via Intel® PROSet software | |
| Warranty | Limited Lifetime | |

FOR PRODUCT INFORMATION

| | |
|---|--|
| World Wide Web: | www.intel.com/network/wireless |
| U.S. and Canada | 800-538-3373 |
| UK | +0870-6072439 |
| France | +01-41-918529 |
| Germany | +069-9509-6099 |
| Italy | +02-696-33276 |
| Spain | +91-377-8166 |
| Hong Kong, Taiwan, Korea, Singapore and ASEAN | +65-213-1000 |
| Australia | +61-2-9937-5800 |

† Country dependent
 †† Additional certifications pending
 * Other names and brands may be claimed as the property of others

Information in this document is provided in connection with Intel products. No license, express or implied, by estoppel or otherwise, to any intellectual property rights is granted by this document. Except as provided in Intel's Terms and Conditions of Sale for such products, Intel assumes no liability whatsoever, and Intel disclaims any express or implied warranty, relating to sale and/or use of Intel products including liability or warranties relating to fitness for a particular purpose, merchantability, or infringement of any patent, copyright or other intellectual property right. Intel products are not intended for use in medical, life saving, or life sustaining applications. Intel may make changes to specifications and product descriptions at any time, without notice. For the most current product information, please visit <http://www.intel.com/network/wireless>

Intel® PRO/WIRELESS 5000 LAN PRODUCT SPECIFICATIONS

| | | |
|-----------------------------|--|--|
| ACCESS POINT | Form Factor | Access Point |
| | Dimensions (142mm x 218mm x 84mm) | 5.6 in x 8.6 in x 3.3 in |
| | Weight | 27 oz (765 g) |
| | Wired Interface | RJ-45 |
| | LEDs | Link, Activity, Power |
| | Operating Temperature | 0 to +45 Celsius |
| | Humidity | 10 to 90% non-condensing |
| | Users Supported | 64 Active Users |
| | AC Adapter | 100-230V AC Adapter |
| | PoE (Power over Ethernet) | Supports IEEE Standard 802.3af PoE** |
| | Wired Network Standard | 10/100BTx |
| | WLAN Standard | IEEE 802.11a |
| | Optional WLAN Standard | 802.11b via upgrade kit |
| | Warranty | 3-year Limited |
| DUAL ACCESS POINT | Form Factor | Access Point |
| | Dimensions (142mm x 218mm x 84mm) | 5.6 in x 8.6 in x 3.3 in |
| | Weight | 28 oz (794 g) |
| | Wired Interface | RJ-45 |
| | LEDs | Link, Activity, Power |
| | Data Rates (802.11b) | 11, 5.5, 2, 1 Mbps |
| | Indoor Range (802.11b) | 100 ft (30 m) @ 11 Mbps 200 ft (60 m) @ 1 Mbps |
| | Outdoor Range (802.11b) | 350 ft (105 m) @ 11 Mbps 1100 ft (335 m) @ 1 Mbps |
| | Frequency Band (802.11b) | 2.400 to 2.4835 GHz |
| | Modulation (802.11b) | CCK, DQPSK, DBPSK |
| | Wireless Medium (802.11b) | Direct Sequence Spread Spectrum (DSSS) |
| | Channels (802.11b) | 3 non-overlapping |
| | Output Power (802.11b) | 35 mW |
| | Operating Temperature | 0 to +45 Celsius |
| Humidity | 10 to 90% non-condensing | |
| AC Adapter | 100-230V AC | |
| PoE (Power over Ethernet) | Supports IEEE Standard 802.3af PoE** | |
| Wired Network Standard | 10/100BTx | |
| WLAN Standard | IEEE 802.11a and 802.11b | |
| Warranty | 3-year Limited | |
| PCI ADAPTER | Form Factor | PCI Adapter |
| | Dimensions (board with Mini PCI) | 6.6 in x 2.75 in (168mm x 70mm) |
| | Dimensions (with bracket and antenna) | 8.4 in x 5.1 in (213mm x 130mm) |
| | Weight | 3.2 oz (91 g) |
| | Connector Interface | PCI |
| | LEDs | Link, Activity |
| | Operating Temperature | 0 to +65 Celsius |
| | Humidity | 10 to 90% non-condensing |
| | Transmit Power | 450 mA Typical 480 mA Max |
| | Receive Power | 420 mA Typical 440 mA Max |
| | Sleep | 30 mA |
| | Voltage | 3.3V |
| | WLAN Standard | IEEE 802.11a |
| | WHQL | Yes |
| Architecture | Infrastructure, Ad hoc (peer-to-peer) | |
| Roaming | 802.11a compliant for seamless roaming between access points | |
| Wired-to-wireless switching | Via Intel® PROSet software | |
| Warranty | Limited Lifetime | |

PRODUCTS AND MODEL NUMBERS

| | |
|--|----------|
| Intel® PRO/Wireless 5000 Access Point | WSAP5000 |
| Intel® PRO/Wireless 5000 LAN Dual Access Point | WDAP5000 |
| Intel® PRO/Wireless 5000 LAN CardBus Adapter | WCB5000 |
| Intel® PRO/Wireless 5000 LAN PCI Adapter | WPC5000 |
| Intel® PRO/Wireless 5000 LAN Starter Kit (Starter Kit includes one WSAP5000 Access Point and two WCB5000 CardBus Adapters) | WLSK5000 |

For the latest product information, visit us on the World Wide Web at www.intel.com/network/wireless

** Errors and Omissions: Please disregard references to the IEEE 802.3af standard for Power over Ethernet (PoE). These products do not comply with the current 802.3af standard.



Intel® PRO
Network Connections

The Intel® PRO/Wireless 5000 LAN Family of Products

The first wireless networking technology fast enough to take care of business

Intel® is leading the computing industry's transition to 802.11a Wireless LAN with a comprehensive line of Intel® PRO/Wireless 5000 LAN products.

Intel PRO/Wireless 5000 LAN products offer speeds up to 54 Mbps, network capacity for more users and the 5 GHz, clean spectrum for optimal wireless performance. Users get the highest throughput available in any wireless network technology—enough to handle data intensive applications, large files and true multimedia streaming video.



Features

IEEE 802.11a compliant technology

Data rates up to 54 Mbps

128, 64, and 0-bit WEP (Wired Equivalent Privacy) encryption with VPN compatibility; 802.1x support provided via future Web download

Full driver support for leading operating systems

Roaming

Software configurable antenna

Access points with options for dual 802.11a and 802.11b capabilities

Auto-sensing and switching

Eight non-overlapping channels for greater network capacity

Benefits

- Broad compatibility with other 802.11a products
- Ability to operate in both infrastructure and ad-hoc modes

- Wireless access up to five times faster than 802.11b
- Operates on all defined data-rates in the 802.11a standard (54, 48, 36, 24, 18, 12, 9 and 6 Mbps)

- Strong security protects data transmissions from unauthorized access
- VPN compatibility allows the highest level of security available

- Easy compatibility with widely used operating systems including Windows® 98SE, Me, 2000, and Windows® XP

- While moving through environments with multiple access points, the client stays connected

- Customized cell coverage
- Better control of access point ranges and transmissions

- A single access point can support both 2.4 and 5 GHz users simultaneously
- Allows support of an existing 802.11b infrastructure while deploying an 802.11a network

- Wired-to-wireless switching lets users move directly from a wired to a wireless connection without rebooting computer or restarting applications

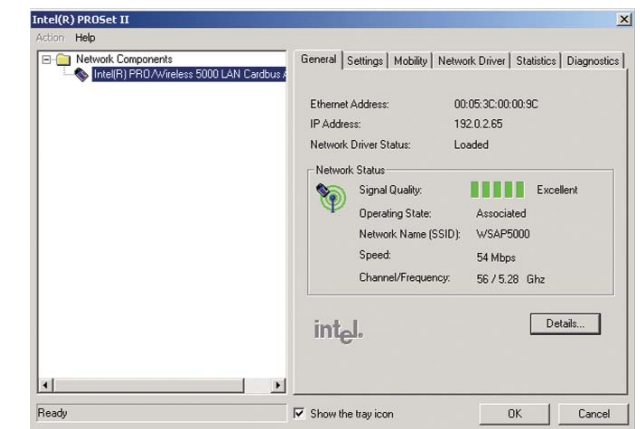
- Network capacity for more users, more data and high-bandwidth applications
- Up to thirteen times the network capacity of 802.11b Wireless LAN technology

Intel® PROSet

PROSet software is already used to manage millions of wired Ethernet connections, and now it lets you manage your wireless Ethernet connections. It lets you deliver driver consistency among desktops, notebooks and servers from leading system suppliers, as well as configuration and diagnostics for Intel-based NICs.

PROSet provides:

- Wired-to-wireless switching
- Easy, unlimited profile management
- Advanced power management features
- A full set of hardware diagnostics
- User configurable settings



PROSet eases setup, maintenance and wireless integration into existing infrastructures.

Intel® Network Connections— The Intelligent Way to Connect

INTEL ADVANTAGES

- **Wired-to-wireless switching software**
- **Software configurable antenna**
- **Profile management using My Wireless LAN Places**

A complete family of 802.11a products

The advantages of an Intel® PRO/Wireless 5000 LAN are clear: by offering a family of high-performance, 5 GHz products including access points, CardBus adapters and PCI adapters, Intel simplifies wireless integration for businesses, making Intel PRO/Wireless 5000 LAN the choice for 802.11a solutions.

Easy installation

To help with installation, Intel provides Site Survey tools and an Installation Wizard that walks administrators through setup. Intel® PRO/Wireless 5000 LAN Access Points can be placed on tables or mounted on walls or ceilings, and they feature software configurable antennas for customizing the cell coverage.

Greater network capacity for more users

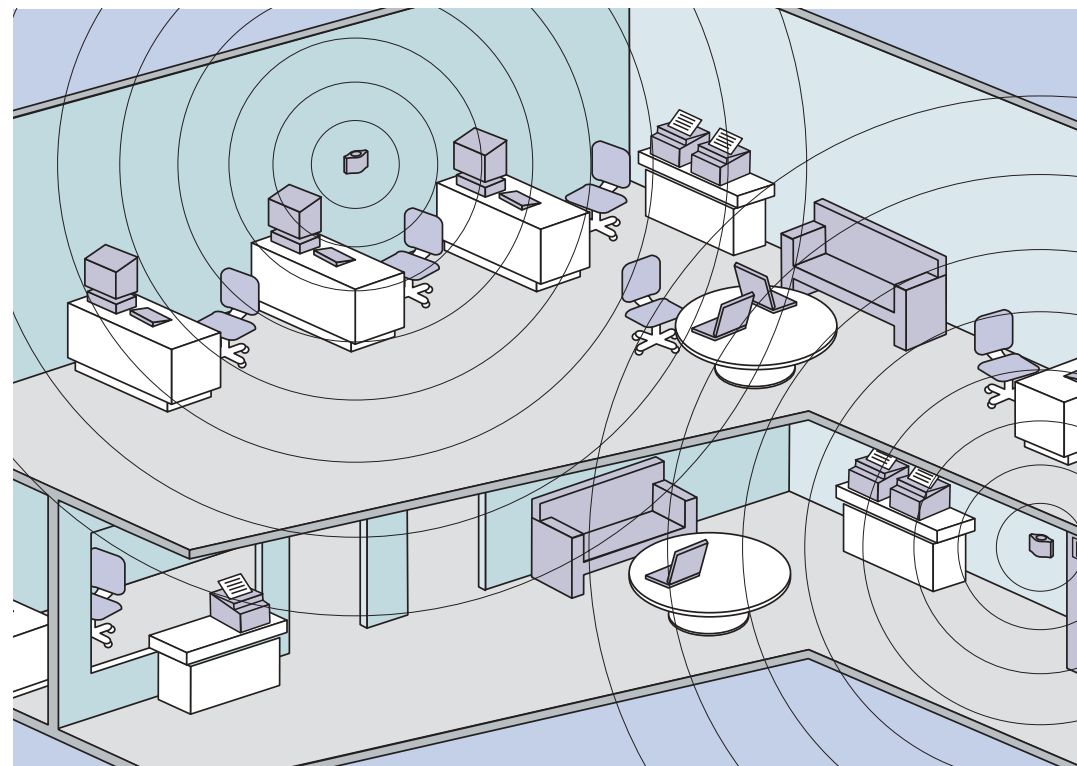
Access points feature eight non-overlapping transmission channels, and provide access for up to 64 users per access point. This means an organization can provide greater bandwidth at a lower cost than the previous generation of Wireless LANs.

Multi-function, industry-standard technology

For even broader compatibility, access points can be dual-function, which means they are capable of working in both 802.11a and 802.11b modes. Dual compatibility lets access points support both 5 GHz and 2.4 GHz clients simultaneously. Access points support IEEE 802.3af Power over Ethernet (PoE) so the access point can draw power from a PoE-enabled connection**—no need to supply additional power. NICs feature auto-sensing and switching, and Intel PRO/Wireless 5000 LAN products offer support for leading operating systems including Microsoft® Windows® XP, taking advantage of Windows XP's features for wireless computing.

High-performance security

To help keep transmissions safe, security features include 128-bit WEP encryption. Support for 802.1x allows for user-based authentication and unique, dynamic, per-session keys for improved security. Additional VPN compatibility allows network administrators to implement the highest level of security available.



Wireless LAN— How it works

In a Wireless Local Area Network (Wireless LAN), installed access points transmit data between the wired network and wireless users. Data travels via radio waves, not through wires.

In-office networks can transmit and receive signals up to 300 feet, and even through walls and ceilings. End users can move freely from one place to another and maintain a high-speed link to the Internet, e-mail and your network.

Access Points & Client Adapters

Intel® PRO/Wireless 5000 LAN Access Point

The 802.11a Intel PRO/Wireless 5000 LAN Access Point operates on the 5 GHz spectrum and features a software configurable antenna. It supports IEEE 802.3af PoE** and a lock to secure the access point. It is designed for placement on a table, or it can be mounted on walls or on the ceiling. Each access point uses eight non-overlapping transmission channels that support up to 64 active users per access point.



Intel® PRO/Wireless 5000 LAN Dual Access Point

The Intel PRO/Wireless 5000 LAN Dual Access Point operates over both 5 GHz and 2.4 GHz frequencies, supporting both 802.11a and 802.11b clients simultaneously. It features a software configurable antenna and supports IEEE 802.3af PoE** and a lock to secure the access point. It is designed for placement on a table, or it can be wall or ceiling-mounted.

Intel® Pro/Wireless 5000 LAN CardBus Adapter

The Intel PRO/Wireless 5000 LAN CardBus Adapter is a Type II, 32-bit adapter that works with a PCMCIA-equipped notebook computer and 802.11a access points. It features wired-to-wireless switching, as well as ad-hoc networking with other 802.11a clients.



Intel® PRO/Wireless 5000 LAN Starter Kit

The Intel PRO/Wireless 5000 LAN Starter Kit includes one 802.11a Intel PRO/Wireless 5000 LAN Access Point and two Intel PRO/Wireless 5000 LAN CardBus Adapters—everything you need to create a high performance Wireless LAN.



Intel® PRO/Wireless 5000 LAN PCI Adapter

The Intel PRO/Wireless 5000 LAN PCI Adapter lets a desktop PC work with an 802.11a access point. It also supports ad-hoc networking with other 802.11a clients.

